



Technology | Document Management | Consulting Services

print | copy | scan | fax | email

Phaser® 3200MFP Evaluator Guide



ABOUT THIS GUIDE

This guide will introduce you to the Phaser 3200MFP black and white multifunction printer and aid you in your evaluation process.

CONTENTS

Section 1 — Introducing the Xerox Phaser 3200MFP Black and White Multifunction Printer

Product Overview	1
Phaser 3200MFP Configurations	2

Section 2 — Evaluating Desktop Multifunction Printers

Overview	4
Evaluate Productivity	4
Evaluate Versatility	5
Evaluate Ease of Installation, Management and Use.....	6

Section 3 — Configurations, Specifications, Supplies, Support and Additional Information Sources

Configuration Summary	7
Specifications	8
Supplies	8
Support and Additional Information Sources	9

SECTION 1

Introducing the Xerox Phaser® 3200MFP Black and White Multifunction Printer

PRODUCT OVERVIEW

The Phaser 3200MFP brings a host of office capabilities to the table. Whether supporting a single user or a small workgroup, it delivers powerful printing performance and a wide array of copying, scanning, faxing and networking features. The Phaser 3200MFP is a great fit for small offices seeking to consolidate devices or adopt fast laser printing with convenient multifunction features.

Improve Your Image

Professional-looking documents and consistent image quality — the Phaser 3200MFP makes you look good.

- Text and graphics are crisp and clear, adding visual impact to your important office print jobs.
- PostScript® 3™ emulation* and PCL® 6 ensure your print jobs are consistently accurate.

Empower Yourself

The Phaser 3200MFP delivers powerful capabilities in a small package — helping you boost your office productivity.

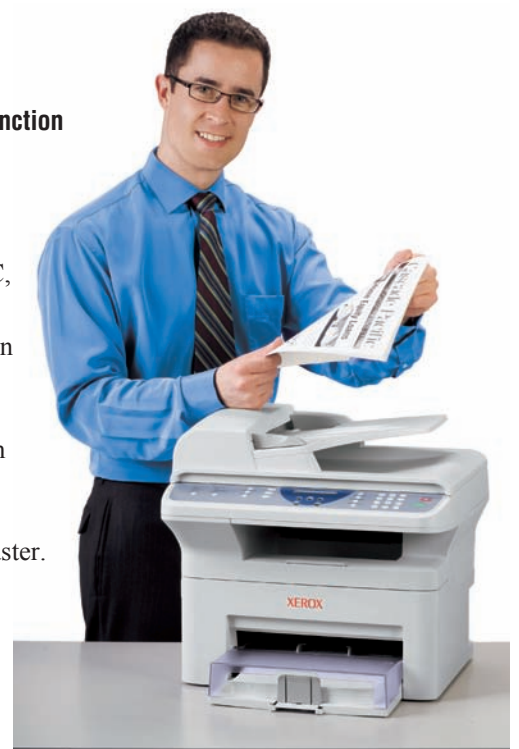
- A space-saving footprint makes it easy to place within quick reach of a single user or a small workgroup.
- The 300 MHz processor and 64 MB of memory deliver the muscle to handle a demanding workload.
- Convenient copy features like ID Card Copy and 25% to 400% reduce/enlarge give you more options.
- Powerful fax capabilities include PC Fax Send, which allows convenient paperless faxing right from your desktop.

Be Effective

Fast black and white laser printing combined with a range of multifunction features — accomplish more with the Phaser 3200MFP.

- Network connectivity* lets everyone in your office share the powerful multifunction capabilities.
- Scan colour or black and white documents directly to your PC, where they can be edited, archived and emailed
- The Secure Fax Receive feature gives you peace of mind when receiving sensitive documents. You can also fax-forward received faxes via email.*
- Use CentreWare IS*, an embedded web server accessible from any standard web browser, for easy device management on your network.
- Print and copy speeds of up to 24 ppm get more work done faster.

*Available on the Phaser 3200MFP/N configuration.



PHASER 3200MFP CONFIGURATIONS



PHASER 3200MFP/B FEATURES:

The Phaser 3200MFP/B comes with the full range of multifunction features standard, including print, copy, scan and fax.

Copy Features:

- Output Speed — Up to 24 ppm
- Resolution — Up to 600 x 600 dpi
- First-Page-Out Time — As fast as 10 seconds
- Features — ID Card Copy, Collation, Reduce/Enlarge, 2-up/4-up, Poster copying, Clone copying, Auto fit

Print Features:

- Output Speed — Up to 24 ppm
- Resolution — Up to 1200 x 1200 image quality
- First-Page-Out Time — As fast as 10 seconds
- Page Description Languages — PCL® 6, PCL 5e
- Features — Custom-size pages, Watermarks, Poster printing, N-up, Fit to page, Scaling, Overlays, Reduce/Enlarge

Scan Features:

- Destination — Scan to desktop
- Resolution — Up to 4800 x 4800 enhanced dpi
- Supported Formats — PDF, JPEG, TIFF
- Driver Support — TWAIN, WIA
- Scan Features — Colour scanning, Scan to PC Desktop® SE Personal Edition, Scan to application

Fax Features:

- Modem — 33.6 Kbps
- Fax Memory — 4 MB dedicated
- Features — Auto redial, 200 Speed dial settings, PC fax send, Broadcast fax, Delay fax, Priority fax, Secure fax receive, Reports
- Compression Formats — MH, MR, MMR, JBIG, JPEG

Controller:

- Processor — 300 MHz
- Memory — 64 MB
- Connectivity — USB 2.0

Paper Capacity:

- Automatic Document Feeder (ADF) — 30 sheets
- Main Tray — 250 sheets
- Bypass Tray — 1 sheet

Media Handling:

- ADF — Weight: 60 to 90 gsm; Custom sizes: 142 x 148 mm to 216 x 356 mm
- Main Tray — Weight: 60 to 90 gsm; Sizes: Letter, Legal, Executive, Folio, Oficio, ISO B5, JIS B6, A4, A5
- Bypass Tray — Weight: 60 to 165 gsm; Custom sizes: 76 x 127 mm to 216 x 356 mm
- Media Types — Plain paper, Envelopes, Labels, Card stock, Transparencies

Reliability:

- Duty Cycle — Up to 10,000 pages per month
- Warranty — One-year warranty

Device Management:

- ControlCentre® 5.0



PHASER 3200MFP/N FEATURES:

The Phaser 3200MFP/N comes with all the features of the Phaser 3200MFP/B, plus:

Print Performance:

- Page Description Languages — PostScript® 3™ compatible

Scan Features:

- Destinations — Scan to email, Network scan to PC

Fax Features:

- Features — Fax Forward to Email

Controller:

- Connectivity — 10/100Base-TX Ethernet

Device Management:

- CentreWare® IS
- CentreWare Web

Section 2

Evaluating Desktop Multifunction Printers

OVERVIEW

Based on our in-depth understanding of customer needs in the office, Xerox recommends considering the following criteria in your evaluation process for desktop multifunction printers:

Evaluate Productivity

Evaluate the performance of the multifunction printer and how it can help you get more done.

Evaluate Versatility

Evaluate the features of the multifunction printer and how you can take advantage of those features.

Evaluate ease of installation, management and use

Evaluate the technical knowledge required to set up, manage and use the multifunction printer and whether you can perform those tasks yourself.

This section of the Evaluator Guide will examine each of these areas, suggest ways you can evaluate a multifunction printer's performance and capabilities in these criteria, and explain how the Phaser 3200MFP exceeds the expectations of desktop multifunction printer customers on all counts.

EVALUATE PRODUCTIVITY

When evaluating for productivity, evaluate the **level of performance** delivered by the multifunction printer and how that will keep up with your workload. Match that with **first-page-out time**, and you'll get a sense of **real throughput** — an indication of how the system will handle the average print jobs (typically 3 to 5 pages long) of a busy, small office or workgroup. Does the system offer the **media flexibility** to support the **variety of jobs** you'll ask it to perform?

THE XEROX
ADVANTAGE

HOW THE PHASER 3200MFP EXCEEDS THE PRODUCTIVITY REQUIREMENT

PERFORMANCE

The Phaser 3200MFP has the power to support either one employee or a small group in office environments. With print and copy output speeds up to 24 ppm, the Phaser 3200MFP makes quick work of your day-to-day workloads. Additionally, a first-page-out time as fast as 10 seconds for printing and copying minimises the time spent waiting for your jobs to start. The 30-sheet automatic document feeder (ADF) makes scanning multipage originals for copying, scanning or faxing easy. With multiple scan destination options, the Phaser 3200MFP can help you digitise documents for editing and distributing.

MEDIA SUPPORT AND CAPACITY

The Phaser 3200MFP supports a range of paper sizes and weights to handle the range of your employees' tasks. A wide range of paper sizes — from 76 x 127 mm to 216 x 356 mm along with custom sizes in the Bypass Tray— makes it easy to print a variety of office documents on various media types, including plain paper, envelopes, labels, card stock and transparencies. All trays support paper weights from 60 - 90 gsm; the bypass tray supports up to 165 gsm for heavier paper stock.

The Phaser 3200MFP also has the media capacity to avoid interruptions and keep you productive. Built to support single users and small workgroups, the Phaser 3200MFP delivers a 250-sheet paper capacity to handle your day-to-day print volumes.

EVALUATE VERSATILITY

Does the multifunction printer deliver a complete set of features that will not only increase your office's capabilities but also help you consolidate older office devices? Does the multifunction printer include print capabilities that will help increase your efficiency? Are the copy speeds and features appropriate to suit your copy volumes? Have you considered how scanning can enable new processes in your company? Are you still utilising fax capabilities in your business?

THE XEROX
ADVANTAGE

HOW THE PHASER 3200MFP EXCEEDS THE VERSATILITY REQUIREMENT

COPY FEATURES

The Phaser 3200MFP copies your black and white documents at speeds of up to 24 ppm — even your longest copy jobs will be finished in minutes. Paired with the 30-sheet ADF, the Phaser 3200MFP helps you quickly process multipage originals. A range of advanced features — including ID Card Copy, collation, reduce/enlarge, 2-up/4-up, poster copying, clone copying, and auto fit — makes this a versatile copier for the desktop.

PRINT FEATURES

With black and white print speeds of up to 24 ppm, as well as a first-page-out time of under 10 seconds, the Phaser 3200MFP has the printing performance you need to power your small office's workflow. From the moment you press Print to when the last page drops into the output tray, the average three-page office print job takes less than 20 seconds with the Phaser 3200MFP—you stay productive and quickly move on to your next task. With up to 1200 x 1200 image quality, the Phaser 3200MFP also ensures sharp, professional-looking prints. Its impressive list of print features includes custom-size pages, watermarks, poster printing, N-up, fit to page, scaling, overlays and reduce/enlarge.

SCAN FEATURES

The Phaser 3200MFP also brings convenient black and white and colour scanning capabilities to your environment. Scan to PC via USB connection is standard; the Phaser 3200MFP/N configuration delivers scan to email and network scan to PC. The 30-sheet ADF eases multipage-document scanning tasks, and up to 4800 x 4800 enhanced dpi resolution delivers sharp images. In addition, Xerox Scan to PC Desktop® software delivers these added scan capabilities:

- Scan management — Eases the process of scanning, distributing and organising scanned images
- Scan editing — Optical character-recognition features transform scanned files into editable documents



FAX FEATURES

The Phaser 3200MFP offers fax features tailored for individual users and small workgroups. Its fax functionality comprises a 33.6 Kbps transmission speed; compression methods that include MH, MR, MMR, JBIG and JPEG; and 4 MB of dedicated memory. Its feature set includes auto redial, 200 speed dial settings, broadcast fax, delayed fax, priority fax, and secure fax receive. Two key fax features include:

- PC Fax Send — transmits paperless faxes directly from your PC via USB or over the network on the Phaser 3200MFP/N configuration
- Fax Forward to Email — forwards received faxes to a specific email address, which saves paper and eases fax archival tasks (available on N configuration)

EVALUATE EASE OF INSTALLATION, MANAGEMENT, AND USE

Most small office environments don't have IT resources on hand, so the technology they deploy must be **simple and easy to install**. Is **ongoing multifunction printer management** eased by tools provided by the vendor? In small offices, **ease of use** is a critical attribute of the equipment you deploy — the multifunction printer must be **easy for your employees to learn and use**, with **simple user interfaces** that help employees access features and program jobs.

THE XEROX
ADVANTAGE

HOW THE PHASER 3200MFP EXCEEDS THE EASE OF INSTALLATION, MANAGEMENT AND USE REQUIREMENTS:

EASE OF INSTALLATION

To start, remove the Phaser 3200MFP from its packaging and consider where to place it in your office. Its small size (438 mm wide by 374 mm deep by 387 mm high) and light weight (24.7 pounds) make it easy for almost anyone to set up—it's also small enough to fit on your desk or into a space-constrained office.

Once the Phaser 3200MFP is set up, connected via USB or Ethernet, and plugged into a power source, just turn on the device. Phaser 3200MFP installation is simple from there. To install the print and scan drivers and management software, just refer to the enclosed installation instructions and setup CD.

EASE OF MANAGEMENT

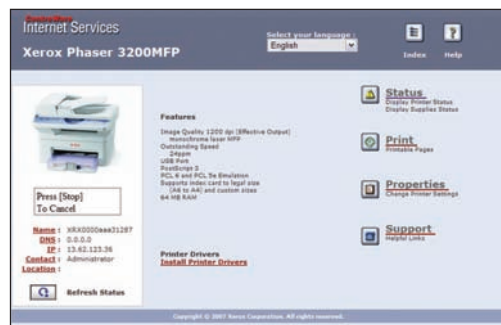
The Phaser 3200MFP/N includes CentreWare® Internet Services, an embedded web server that allows you to manage the settings of your MFP, perform detailed status checks, and manage your fax phonebook from your desktop via any standard web browser.

For the non-networked Phaser 3200MFP/B configuration that is connected via USB 2.0 to a computer, Xerox ControlCentre 5.0 helps you manage your scan, print and fax settings and phonebook and enables you to update the system firmware.

For larger organisations, Xerox CentreWare Web Network Management Utility is a powerful enterprise-level solution that eases the chores of installing, configuring, managing, monitoring, and pulling reports on networked printers, multifunction printers and fax machines across your network. CentreWare Web is interoperable with devices from other vendors, making it a good choice if you have a heterogeneous network.

Another thing to consider is consumables. The Phaser 3200MFP features an integrated print cartridge, minimising the number of consumables you'll need to change. You have two options when purchasing print cartridges for the Phaser 3200MFP:

- Standard-capacity print cartridge — lower-cost cartridge for price-sensitive offices, with a 2,000-page capacity¹
- High-capacity print cartridge — maximises the time between consumables purchases, with a 3,000-page capacity¹

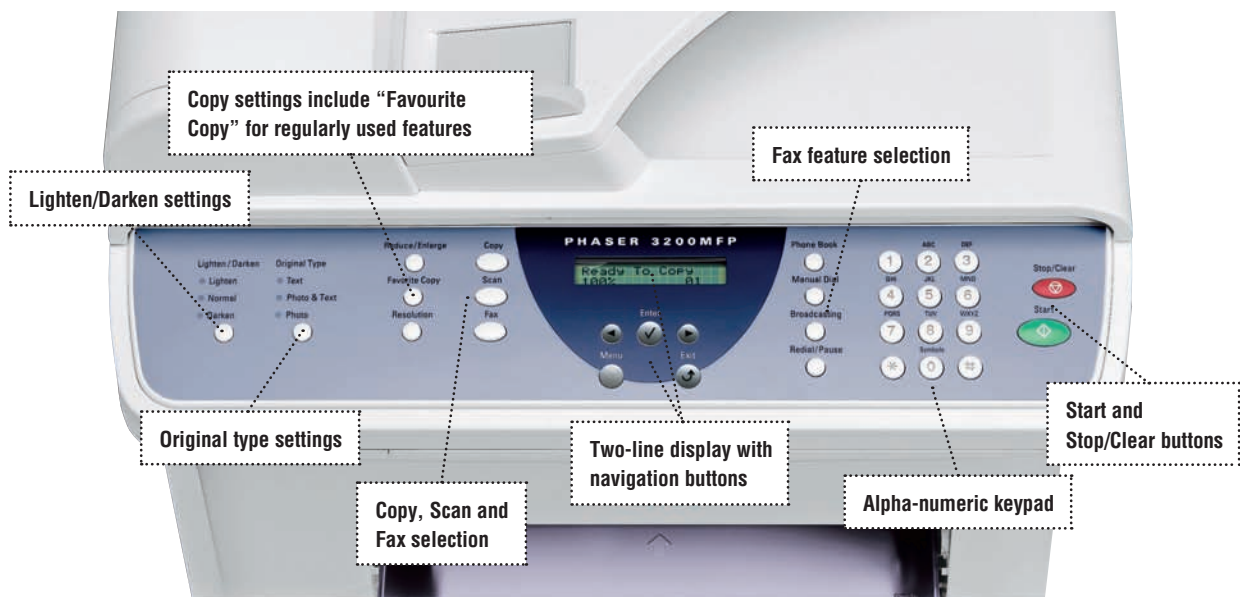


¹ Average standard pages. Declared yield in accordance with ISO/IEC 19752. Yield will vary based on image, area coverage and print mode.

EASE OF USE

The front panel interface on the Phaser 3200MFP offers simple access to copy, scan, fax and administration features. The two-line user interface is controlled by a selection of buttons, including a numeric keypad for programming copy, scan and fax jobs. More advanced features are accessed with five-button navigation that selects programming attributes in the two-line user interface. For normal copy jobs that don't require special settings, all you need to do is put the original on the platen or in the ADF and press the green button — your copy is on its way in just two steps. Administrative features include reports, device setup settings and device maintenance.

The Phaser 3200MFP includes print drivers with a clear, graphical user interface that provides an easy, intuitive way to interact with the system. Similar to the local user interface, the print drivers give quick, easy access to the most commonly used features like collation and paper orientation.



SECTION 3

Configurations, Specifications, Supplies, Support and Additional Information Sources

PHASER 3200MFP CONFIGURATION SUMMARY



	3200MFP/B	3200MFP/N
Speed	Up to 24 ppm	
Duty Cycle	Up to 10,000 pages / month	
Paper Handling		
Paper input	Standard	ADF: 30 sheets; Custom sizes: 142 x 148 mm to 216 x 356 mm Main Tray: 250 sheets; Sizes: Legal, Executive, Folio, Oficio, ISO B5, JIS B6, A4, A5 Bypass Tray: 1 sheet; Custom sizes: 76 x 127 mm to 216 x 356 mm
Paper output	100 sheets	
Copy		
First-page-out time	As fast as 10 seconds	
Resolution (max)	600 x 600 dpi	
Copy features	Collation, Reduce/Enlarge, 2-up / 4-up, Poster Copying, Clone Copying, Auto fit, ID Card Copy	
Print		
First-page-out time	As fast as 10 seconds	
Resolution (max)	1200 x 1200 image quality	
Memory / Processor	64 MB / 300 MHz	
Page Description Languages	PCL® 6 / 5e	PCL 6 / 5e, PostScript® 3™ compatible
Connectivity	USB 2.0	10/100Base-TX Ethernet, USB 2.0
Print features	Custom-size pages, Watermarks, Poster printing, N-up, Fit to Page, Scaling, Overlays, Reduce/Enlarge	
Scan		
Scan destinations	Scan to desktop	Scan to desktop, Scan to email, Network scan to PC
Scan features	Scan to PC Desktop® SE Personal Edition; PDF; JPEG; TIFF; Colour scanning; TWAIN, WIA drivers; Up to 4800 x 4800 enhanced dpi	
Fax	Embedded fax (33.6 Kbps with MH/MR/MMR/JBIG/JPEG compression)	
Fax features	4 MB memory, Auto redial, Speed dials: 200 settings, PC fax send, Broadcast fax, Delay fax, Priority fax, Secure fax receive, Reports	
		Fax Forward to Email
Warranty	One-year warranty	

PHASER 3200MFP SPECIFICATIONS

Device Management	CentreWare® Internet Services Embedded Web Server, CentreWare® Web, ControlCentre®
Print Drivers Support	<p>Apple Macintosh: Mac OS® 10.3–10.4*,</p> <p>Linux: Fedora™ Core 1–4, Mandrake® 9.2–10.1, Red Hat® 8.0–9.0, SUSE® 8.2–9.2/10.3/10.4</p> <p>Microsoft Windows: 98, Me, NT 4.0*, 2000, XP, 2003 Server (32- and 64-bit), Vista</p> <p>* Available on N configuration only.</p>
Media Handling	
Supported sizes	<p>ADF: 142 x 148 mm to 216 x 356 mm</p> <p>Main Tray: Legal, Executive, Folio, Oficio, ISO B5, JIS B6, A4, A5</p> <p>Bypass Tray: 76 x 127 mm to 216 x 356 mm</p>
Supported weights	<p>ADF: 60 to 90 gsm</p> <p>Main Tray: 60 to 90 gsm</p> <p>Bypass Tray: 60 to 165 gsm</p>
Operating Environment	<p>Temperature: 10 to 32° C</p> <p>Relative Humidity: 20 to 80%</p> <p>Sound Pressure Levels: Printing: 6.62 B, Standby: 4 B</p> <ul style="list-style-type: none"> • Standby Mode: < 35 db(A) • Warm Up: < 49 dB(A) • Copying: < 55 dB(A) • Printing: < 53 dB(A)
Electrical	<p>Power: 220–240 VAC, 50/60 Hz, 3.0 A</p> <p>Power Consumption:</p> <ul style="list-style-type: none"> • Power Save Mode: Under 12 W • Average: 400 W • ENERGY STAR® qualified
Physical Dimensions	<p>Width: 438 mm</p> <p>Depth: 374 mm</p> <p>Height: 387 mm</p> <p>Weight: 11.2 kg</p>
Agency Approvals	<p>FCC Part 15, Class B</p> <p>FCC Part 68</p> <p>Listed UL 60950-1</p> <p>CSA 60950-1-03</p> <p>CE Mark applicable to Directives 72/23/EEC, 89/336/EEC and 1999/5/EC</p>

Supplies	Part Number	Description	Capacity
	113R00735	Standard-Capacity Print Cartridge	2,000 pages ¹
	113R00730	High-Capacity Print Cartridge	3,000 pages ¹

¹ Average standard pages. Declared Yield in accordance with ISO/IEC 19752. Yield will vary based on image, area coverage and print mode.



SUPPORT AND ADDITIONAL INFORMATION SOURCES

UNRIVALED SERVICE AND SUPPORT

Behind every Xerox product is a large network of customer support that's unrivaled in the industry and available when you need it. Xerox service professionals use leading-edge technologies to keep you up and running. They're even linked to the engineers who designed your product, so you can be confident when you choose Xerox. And Genuine XEROX supplies are always readily available.

ADDITIONAL INFORMATION SOURCES

Phaser 3200MFP Front Panel:

- The front panel offers tools and information pages to help with machine setup, feature selections, operational problem solutions, and media feed and supply issues.

Customer Documentation:

- Read Me First
- Quick Reference Guide
- User Manual
- Print Driver (PCL)
- Scan Driver
- Scan Software by Nuance®
- ControlCentre 5.0 Management Software

On the web:

Visit www.xerox.com/office for:

- Product, supply and support information
- Downloading drivers
- Finding your local Xerox sales representative
- Online documentation

Visit www.xerox.com/office/support for:

Support and service information, including the same troubleshooting Knowledge Base used by Xerox Customer Support staff to provide the latest technical information on:

- Application issues
- Errors
- Print-quality issues
- Troubleshooting

Questions? Comments? Problems?

If you have any questions, please contact your Xerox sales representative, call **00 800 9000 9090**, or visit us on the web at www.xerox.com/office.

