

Phaser®
3635MFP
A4
Black and White
Multifunction
Printer



Xerox Phaser® 3635MFP Multifunction Printer

Multifunction power,
work group productivity



Phaser® 3635MFP Multifunction Printer

Print. Copy. Scan. Fax. Email. The Xerox Phaser 3635MFP multifunction printer gets your critical office tasks done with speed and efficiency, delivering a powerful all-in-one solution at a great value.

More capabilities for more people

A powerful work group multitasker, the Phaser 3635MFP delivers a set of features that you would usually expect to find on large, departmental multifunction systems.

33
ppm

- **Fast results.** A quick print and copy speed of up to 33 ppm keeps pace with your work group print demands.

- **Powerful scanning.** Capture and share your documents with advanced scanning tools.
- **Digitise, organise, distribute.** Maximise your hardware investments, and manage and distribute documents more effectively, with innovative Xerox Workflow Solutions (built on Xerox EIP technology) and software solutions from Xerox Alliance Partners.
- **Enhanced security.** Hold private print and fax jobs in the queue until they're released by the job owner. Image data from the device's memory can be automatically "shredded" after every job or on request, and you can easily limit or restrict access to device functions for enhanced security.
- **Impressive results.** 600 x 600 dpi printing (up to 1200 x 1200 enhanced image quality) delivers outstanding print resolution without slowing down the all-around exceptional performance.
- **Save paper, save money.** Standard automatic two-sided printing and copying reduces paper usage, while helpful features like N-up and booklet printing let you easily create documents like handouts and presentation packs.

The Xerox experience: a familiar advantage

With the same walk-up simplicity our larger devices are known for, the Phaser 3635MFP gives your work group all-in-one productivity that's totally Xerox.

- **Big functions, small size.** Whether on a desktop or as a floor-standing unit (with optional cabinet stand), the small size fits where you need it and replaces single-function machines with one convenient multifunction solution.
- **More control.** Xerox Standard Accounting software provides accounting features that let you track and analyse device usage by function for greater cost control.
- **Workflows made easy.** Simple controls let you set up the touch-screen to prioritise the functions your staff uses most, while a host of optional solutions offered by Xerox and third-party providers make the Phaser 3635MFP even more useful.
- **Easy adaptability.** Engineered to easily meet the needs of any industry, the Phaser 3635MFP features Xerox® Workflow Solutions (built on the Xerox® Extensible Interface Platform®), which enables personalised, business-specific applications you can access right from the colour touch screen.

Easy to operate and maintain

Designed top to bottom for optimum ease of use, seamless network integration and unbeatable reliability.

- **IT-friendly.** Network printing is easier than ever to manage. CentreWare® IS internal web server allows administrators to remotely monitor printer status, configure settings and receive alerts. For enterprise-level printer management, CentreWare® Web makes it easy to install, configure, obtain reports and troubleshoot all network devices, regardless of manufacturer.
- **Ready for action.** Installation is extremely fast and easy, getting your device up and running on the network in minutes.
- **Easy supplies replacement.** All-in-one, user-replaceable print cartridges greatly reduce time spent on device interventions.
- **An easy fit.** Network integration has never been easier and with built-in LDAP support, your system administrator can upload your company's address book directly to the device for fast access to recipients' email addresses and fax numbers.
- **The Xerox-exclusive Print Around feature** holds a job needing resources (such as a different paper size) and prints the next job in the queue.

Phaser® 3635MFP Quick Facts

- Print and copy up to 33 ppm
- 600 x 600 dpi (up to 1200 x 1200 enhanced image quality)
- Powerful 360 MHz processor
- 75,000 pages/month duty cycle
- 256 MB memory (expandable to 512 MB) plus 80 GB Hard Drive



Print / Copy / Scan / Fax / Email

A4

33 ppm

WxDxH:
472 x 478 x 543 mm



1 Duplex Automatic Document Feeder. Gives you convenient, money-saving, two-sided output across all functions – printing, copying, scanning and faxing – on a variety of media.

2 80 GB internal hard drive. Lets you handle more tasks at the device. Use the Save Print feature to keep frequently used documents available for quick printing on the go.

3 Advanced faxing capabilities. Includes Embedded Fax and LAN Fax (for paperless faxing right from your desktop), plus Fax Folders, Secure Fax Receive and fax forwarding options (available on 3635MFP/X configuration). The Network Fax Server and other third-party solutions create even more fax workflow possibilities.

4 One-touch power-down. Allows fast and simple switching to power save mode or device shut-off during periods of extended down time. Another press of the button quickly restores power.



- 5 USB direct printing/scanning.** Lets you save to or print directly from any USB memory drive. Quickly scan a hard copy document and save it on your USB drive for portable storage on the go, or walk up and print with no computer needed.
- 6 A built-in convenience stapler.** Lets you staple documents at the device and quickly be on your way (3635MFP/X configuration).
- 7 Add an optional 500-sheet paper tray.** Boosts total paper capacity to 1,050 sheets.

Advanced scanning, simplified

With the power of scanning built-in, the Phaser 3635MFP multifunction printer delivers cutting-edge yet easy-to-use solutions for seamlessly creating, organising and distributing business-critical digital files.

- **Store on the device**

- **Copy to Hard Drive**

- Copies files to the device's hard drive for easy walk-up retrieval

- **Routing made easy**

- **Network Scanning**

- Uses templates to send scanned images to predefined locations

- **Scan to Email**

- Sends scans to email recipients directly from the front panel

- **Scan to USB**

- Scans can be loaded directly onto a user's portable USB storage device

- **Repurpose documents**

- **Xerox Scan to PC Desktop®**

- Provides helpful tools for editing and document manipulation

- **Faster file delivery**

- **Compression Technology**

- Compresses file size for fast delivery and reduced network load

- **Convert documents**

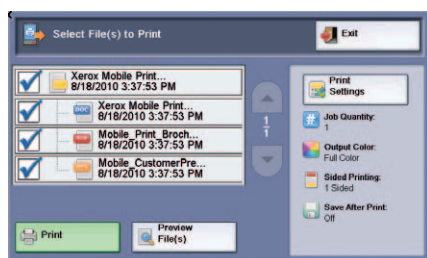
- **Multiple Formats**

- Scans can be saved in PDF, TIFF or JPEG format



So advanced it's simple, the cutting-edge, 7 inch, full-colour touch screen redefines walk-up ease-of-use. Whether printing, copying, scanning, faxing or emailing, the bright, colourful display guides you from start to finish with large, clear, easily recognisable icons.

Xerox Workflow Solutions take your Phaser 3635MFP multifunction printer to a higher level of office optimisation.



Xerox Mobile Print Solution is just one of many personalised solutions you access right from the touch screen interface.

Xerox Mobile Print Solution

With Xerox, being mobile has never been easier. Xerox makes mobile printing simpler and more convenient, while keeping your business secure. That's why we're empowering today's mobile professionals with the freedom to send print jobs from any email-enabled device.

Transform the way your organisation gets vital work done with the power of Xerox Workflow Solutions. Xerox knows it's about streamlining your workflow – and it starts by using Xerox Workflow Solutions right from your Phaser 3635MFP multifunction printer.

Phaser® 3635MFP



	Phaser 3635MFP/S	Phaser 3635MFP/X
Speed	Up to 33 ppm A4	
Duty Cycle	Up to 75,000 pages/month	
Paper Handling	Duplex Automatic Document Feeder: 60 sheets; Size: From A5 (148 mm x 210 mm) to 216 x 356 mm; Weight: 50 to 120 gsm Bypass Tray: 50 sheets; Size: 98 x 148 mm to 216 x 356 mm; Weight: 60 to 163 gsm Tray 1: 500 sheets; Size: 148 x 210 mm to 216 x 356 mm; Weight: 60 to 105 gsm; Standard selectable sizes up to A4	
Paper input	Standard	
	Optional	Tray 2: 500 sheets; Size: 148 x 210 mm to 216 x 356 mm; Weight: 60 to 105 gsm; Standard selectable sizes up to A4
Output	250 sheets, automatic two-sided	
Finishing	NA	Offline Convenience Stapler: 20-sheet, single position
Print	As fast as 8.5 seconds	
First-page-out-time		
Print resolution	600 x 600 dpi printing (up to 1200 x 1200 enhanced image quality)	
Memory (standard / max)	256 MB / 512 MB plus 80 GB Hard Drive	
Processor	360 MHz	
Language support	PostScript® 3™ compatibility, PCL® 6 and 5e emulations	
Connectivity	10/100 BaseT Ethernet, USB 2.0	
Print features	Custom page size, Automatic two-sided, Watermark, Secure print, Sample set, Delayed print, Cover selection, Paper selection by attribute, Toner saver, N-Up, Mirror image, Negative image, Image rotation, Saved settings, Booklet creation, Fit to new paper size, Collation, Print to Hard Drive, Print from Hard Drive, Print from USB Memory Drive	
Copy	As fast as 8.5 seconds	
First-page-out time		
Copy resolution	600 x 600 dpi	
Copy features	Automatic two-sided, Collation, Reduce/Enlarge, Book copying, Mixed-size originals, Edge erase, Image shift, Booklet creation, Covers, Auto paper select, Lighten/darken, Transparency Separators, Multi-Up, ID Card Copy, Copy to Hard Drive, Background suppression	
Fax	NA	Embedded Fax (33.6 Kbps with MH, MR, MMR, JPEG and JBIG compression), LAN Fax
Fax features	NA	Up to 600 x 600 dpi (superfine) resolution, Colour Fax send, Address Book, Priority send, Fax reports, Junk fax list, Junk fax prevention, Background suppression, Mailboxes, Polling, Forward to Fax / Email, Secure Fax, Fax broadcast
Scan	Scan to Email, Network Scanning, Scan to USB Memory Drive	
Scan destinations		
Scan features	File formats: PDF, JPEG, TIFF, Multi-page TIFF; Xerox Scan to PC Desktop® Personal Edition (Includes 1 seat of OmniPage, PaperPort, and Image Retriever for use with network scanning), Colour Scanning, FTP, HTTP, HTTPS, SMB	
Accounting	Xerox Standard Accounting (tracks copy, print, scan, fax), Network Accounting enablement supports optional Xerox Alliance Partner Solutions	
Security	Image Overwrite Security, SSL, Authentication, 802.1x, SNMPv3, IP Filtering, Audit Log, HTTPS, Secure Print, Secure Fax	
Options	Foreign Device Interface, 256 MB Memory Upgrade, Cabinet Stand, Network Accounting, Network Fax Server Enablement	
Warranty	One Year On-Site Warranty*	

* Products purchased under a 'PagePack' agreement do not carry a warranty. Please refer to your service agreement for full details of your enhanced service package.

Device Management

CentreWare® Internet Services, CentreWare Web, CentreWare for HP OpenView, CentreWare for IBM Tivoli NetView, CentreWare for Unicenter, CentreWare® Management Pack for Microsoft System Center Operations Manager (SCOM), Xerox Novell Distributed Print Services Solution (NDPS)

Media Handling

Media Types: Plain paper, recycled, bond, lightweight, heavyweight, envelopes, labels, transparencies, punched, letterhead, pre-printed, archive

Operating Environment

Temperature: Maximum Range: 10°–32°C, Recommended Range: 16°–30°C
 Humidity: Maximum Range: 20–80%, Recommended Range: 30–70%
 Electrical: Power: 220–240 VAC, 50/60 Hz

Power Consumption: Average: 600 watts, Standby: 55 W, Printing: 750 W, Power Saver mode: 15 W, ENERGY STAR® Qualified

Dimensions (WxDxH)

472 x 478 x 543 mm
 Weight: 22.1 kg

Print Drivers

Windows 2000/2003 Server/XP/XP Professional/Vista, Macintosh OS X v10.3, Solaris 9/10, Red Hat ES, Linux, Fedora Core 4, SUSE, AIX 5, HP-UX 11.0/11i

What's in the box

- Phaser 3635MFP Multifunction Printer
- Print Cartridge (5,000 print capacity)
- World Kit (includes Printer Installer and utilities CD, Software and documentation CD, Registration card, Warranty booklet)
- Power cord

Supplies and Options

High Capacity Print Cartridge – approx. 10,000*	108R00795
Standard Print Cartridge – approx. 5,000 pages**	108R00793
Network Accounting Enablement	098S04928
Network Fax Server Enablement	098S04931
256 MB Memory Upgrade	098N02189
Paper Tray	098N02190
Cabinet Stand	097N01674
Foreign Device Interface Kit	097N01676
Staple Cartridge	108R00823
Wireless Network Adaptor	
- European Power Converter***	097S03741
- UK Power Converter	097S03742

*Declared Yield in accordance with ISO/IEC 19752. Yield will vary based on image, area coverage and media used.

**Yield will vary depending on job run length, media size and orientation

***Local adaptor required for Switzerland and Denmark



Call today. For more information call or visit us at www.xerox.com/office

