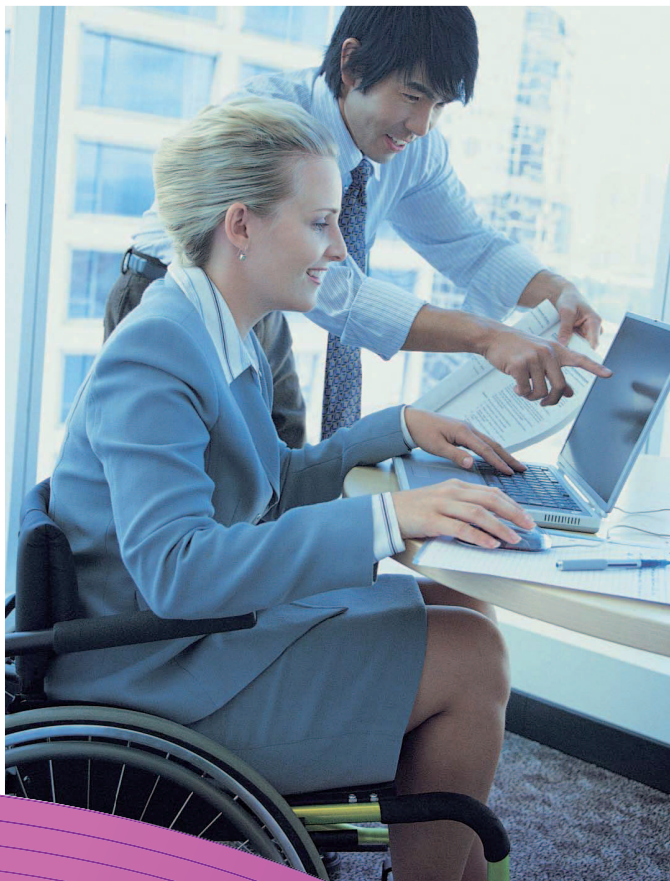




# Xerox® Copier Assistant™ Software

## Enhance accessibility in your office.

With Xerox Copier Assistant software, your employees—and the public—have easier access to the copying capabilities of Xerox copiers and multifunction printers. An alternative to the standard touchscreen, Xerox Copier Assistant software helps everyone—especially people who are wheelchair users, blind or visually impaired—easily program copy jobs and make copies.



### Break down the barriers

This software, coupled with a dedicated PC, helps users be more productive and independent by leveraging:

- Text-to-speech technology
- Screen magnification software
- Easy keyboard access to copying features using tab, arrow, function and hot keys

### Xerox Copier Assistant software key features

- Improves accessibility to copying features
- Enlarged on-screen user interface provides an alternative to the standard touch screen user interface
- Simplifies copying jobs with easy-to-use, easy-to-program features
- Embedded text-to-speech software talks the user through the copying steps, including advanced tasks such as stapling, collating and two-sided copying as well as indicating when doors are left open or if a paper tray is empty (only available in English)

### A convenient solution designed to help you do better work faster.

We are committed to making Xerox products accessible to everyone. That's why, starting right at the beginning of every new product's design phase, our experts take great care to make sure that people with disabilities will find working with Xerox products as easy and convenient as possible.

# Xerox® Copier Assistant™ Software

Enhance accessibility in your office.

## In the USA, Section 508

Section 508 is a federal government regulation, which requires that electronic and information technology developed, procured, maintained, or used by the federal government be accessible to individuals with disabilities. Xerox supports and proactively designs accessibility enablements into products to embrace the letter and intent of Section 508.

## In the UK, Disability Discrimination Act

As a manufacturer and supplier to organizations who provide services to the public, Xerox recognizes the importance of user accessibility of its products. This means keeping up with developments in legislation, such as the UK Disability Discrimination Act, and designing the working environment appropriately.

## System Requirements

### Operating Systems

Windows 2000 to XP Professional:

- Software processor and speed: 466 MHz or higher Pentium-compatible CPU
- Software required disk space: 50 MB
- Software min required RAM: 128 MB

## Other Specifications

The Xerox Copier Assistant accessibility solution requires:

- Xerox Copier Assistant software (includes embedded text-to-speech feature)
- PC and accessories (customer provides PC, keyboard, monitor, mouse and USB/RS232 cable)
- Connectivity via USB port with USB v1.1 type B cable
- Connectivity via RS232 port is required for the following products :
  - CopyCentre C65/C75/C90
  - WorkCentre Pro 65/75/90
- Monitor: 15" Display
- Keyboard: Standard with function keys
- Input Devices: Mouse or similar pointing device
- CD-ROM: 4x Speed
- Screen Magnification: MAGic
- Audio Output: Sound card with speakers
- Certification: FCC/CISPR B
- Optional: JAWS and Narrator text-to-speech software

For more information, visit us at [www.xerox.com/office](http://www.xerox.com/office)

## Compatible Products

### Multifunction

- ColorQube 9201/9202/9203
- Document Centre® 535 Multifunction System
- Document Centre 545 Multifunction System•
- Document Centre 555 Multifunction System
- WorkCentre® 5030/5050
- WorkCentre 5135/5150
- WorkCentre 5632/5638/5645/5655
- WorkCentre 5665/5675/5687
- WorkCentre 5735/5740/5745/5755
- WorkCentre 5765/5775/5790
- WorkCentre 7545/7556
- WorkCentre 7655/7665/7675
- WorkCentre 7755/7765/7775
- WorkCentre® BookMark 40 & 55
- WorkCentre M35®
- WorkCentre M45®
- WorkCentre M55®
- WorkCentre Pro 32 Color Multifunction System
- WorkCentre Pro 35
- WorkCentre Pro 40 Color Multifunction System
- WorkCentre Pro 45
- WorkCentre Pro 55
- WorkCentre Pro 65
- WorkCentre Pro 75
- WorkCentre Pro 90
- WorkCentre Pro 232/238
- WorkCentre Pro 245/255
- WorkCentre Pro 265/275
- WorkCentre Pro C2128/C2636/C3545

### Copiers

- CopyCentre® 232/238
- CopyCentre 245/255
- CopyCentre 265/275
- CopyCentre C32 Color® Digital Copier
- CopyCentre C35® Digital Copier
- CopyCentre C40 Color® Digital Copier
- CopyCentre C45® Digital Copier
- CopyCentre C55® Digital Copier
- CopyCentre C65® Digital Copier
- CopyCentre C75® Digital Copier
- CopyCentre C90® Digital Copier
- CopyCentre C2128/C2636/C3545