

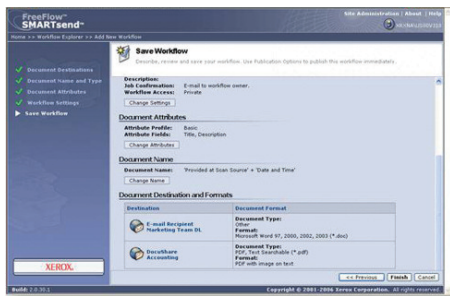


Xerox® SMARTsend® 3.0

Scanning made fast
and secure

Increase your productivity by unleashing the power of scanning

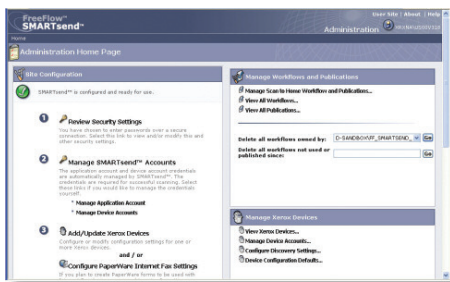
Use the power of scanning to transform the way you work. It's possible with SMARTsend® software. Use SMARTsend and your multifunction system to scan paper documents into digital form and distribute them to multiple destinations to make more information accessible to more people.



Work processes made smarter

SMARTsend software helps you simplify information management. Now sharing documents is easier than ever.

Share hard copy information in seconds. Scan a document once, and SMARTsend will transform it to digital and send it to destinations you have pre-programmed in a workflow – multiple email addresses, repositories, network folders, FTP folders, web URLs or remote printers.



- Use the Scan to Home button to send documents to your personal email, ECM systems or network folder. Implement as a single scan workflow requiring network authentication or PIN entry, or as individual scan workflows for each walk-up user.
- With the Scan and Store capability, you can scan in double-sided and colour documents, change scan resolutions and view larger thumbnails in a larger multifunction system UI. Additionally, you can print two-sided and in colour with the Browse and Print feature.
- When creating workflows for distribution, you have direct access to your global mail directory, so there's no need to type in email addresses.
- Powerful Optical Character Recognition (OCR) capabilities (available in Pro Version) ensure scanned documents are accurate at retaining page layout and formatting in a wide range of file formats.
- With SMARTsend Pro, you can specify the appropriate file format for each destination in your workflow, so if one destination requires PDFs or TIFFs and another Word or Excel files, it's no problem.
- Use SMARTsend Pro to convert your scanned document into text searchable PDF, Word or Excel files and distribute them directly to DocuShare® or several other supported repositories – turning hard copy into readily available, indexed knowledge.
- SMARTsend 3.0 supports OCR to MS Word 2007, MS Excel 2007 and WordPerfect 10 formats.
- SMARTsend enables you to set up automated email or printed delivery confirmations, so you can be assured your files are delivered.



Create the workflow

Publish the workflow

- System Workflow
- PaperWare Workflow

- Scan to Email
- Scan to Repository
- Scan to File

Print at Remote System

1. Create the workflow at your PC. Using Workflow Wizards indicate document destinations, digital formats, how you want to publish it, etc.

2. Publish the workflow.

- At the device: In the UI scroll down the list of stored workflows, select yours, scan document for distribution, push the start button!
- PaperWare cover sheet: Print a PaperWare cover sheet listing your workflow destinations, place it on top of your document, scan, and SMARTsend interprets and routes the document accordingly.

3. Enjoy the Power of SMARTsend. In a single simple workflow you have distributed information to multiple destinations and multiple people.

Download a free trial version of SMARTsend® 3.0 at www.xerox.com/SMARTsend

A smart network citizen

SMARTsend software is incredibly IT friendly. It takes the load off system administrators.

- Leverages network user profiles for security and easy access. There's no need to set up individual users, and if you want to limit access, you can do that too.
- Provides automatic device discovery so users can easily locate the most convenient multifunction system.
- Provides the ability to filter device lists based on location and device name, as well as ability to access a device Web UI for administrators.
- Gives you maximum security for your sensitive information with multiple security features, including secure encrypted end-to-end filing via HTTPS, secure device discovery and configuration via SNMPv3, integrated network authentication and password-protected private workflows.
- Tracks workflow usage – the activity log ensures all workflows have an audit trail.
- Allows automatic deletion of expired or outdated workflows.

Technologically advanced

SMARTsend software's leading-edge features are designed to optimise your network investment and take your business process into the future.

- Supports multiple Xerox products, including Xerox® ColorQube™, black and white and colour WorkCentre® Pro systems as well as legacy Document Centre® scan-enabled devices.
- Enables you to add indexing information (metadata) to documents, and then use that identifying data later to search for them, so finding your documents is easy.
- Delivers the following functionality through Web service SDK:
 - Job Management (including programmatic job submission, cancellation)
 - Platform Management
 - Workflow Management
 - Device Configuration
 - Scan to Home Management

- Customers with Xerox multifunction systems enabled by EIP can easily scan and store hard copy information, such as expense forms or patient records, into a document repository, including Xerox DocuShare® Microsoft SharePoint® and Windows folders.
 - At your multifunction system touch screen, you can select the Scan to Repository icon, which can be customised to meet your company's needs, for instance, "Scan to DocuShare."
 - You can look through your online folders and archives to select the destination for your document.
 - When you touch the Scan icon a thumbnail view of the document will appear on the screen, giving you visual confirmation that your information was scanned correctly. You can change the names of your documents by using the keyboard on the touch screen.
 - When you select the Store button, you complete the process. At this point, you may choose to print a confirmation report that verifies job status.

Specifications for Xerox® SMARTsend® 3.0

SMARTsend Key Features

- Web-based software application that automates the digital transformation, conversion and distribution of hardcopy documents, making more information accessible to more people
- Scanning workflow creation via web browser wizards
- Send to multiple destinations with a single scan
- Add indexing information (metadata) to scanned documents
- Convert scanned documents into a variety of industry standard formats
- Vary the scanned image format by destination
- Scan to Home feature allows easy set up of scan destinations (email address, FTP site, ECM Systems or network folder) for walk-up users
- Secure encrypted transmission of scanned data via HTTPS
- Private Workflows (with multifunction system Network Authentication)
- Delivery confirmations via email or printed at multifunction system scan source

SMARTsend Pro Key Features

Everything in SMARTsend, plus:

- Workflow initiation using PaperWare (scan cover sheets) enables scan destinations to be modified at the scan source
- Integrated Optical Character Recognition facilitates automatic digital archiving and easy document repurposing

System Specifications

For best performance it is recommended that SMARTsend be installed on a dedicated server/computer. The minimum requirements are:

- CPU: 1.0 GHz or faster
 - Hard Drive 1 GB or more free disk space
 - RAM: 512MB or more.
1 GB or more is recommended for all operating systems and is required for Windows Vista)
 - Network Protocol: TCP/IP
(also supports HTTP/HTTPS)
 - Single network adapter
(multiple adapters are not supported)
 - The computer can not be a domain controller.
- SMARTsend may also be installed on a shared print or file server with the above minimum specifications.

Operating Systems Supported

- Windows 2003 Server with ASP.NET enabled, all service packs and critical updates and Internet Information Services installed
- Windows 2008 Server
- Windows XP Professional Workstation SP2 Platform
- Vista Business Edition

The SMARTsend EIP applications are only supported on a Windows 2003 and 2008 servers—not XP Pro or Vista Business Server.

SMARTsend may also be installed on the above operating systems in conjunction with VMware virtual infrastructure or Microsoft Virtual PC/Virtual Server. This may result in reduced performance (slower processing) based on the virtual machine.

Client Requirements

The SMARTsend client interface is web browser-based and can be accessed through the following supported web browsers:

Windows Clients

- Microsoft Internet Explorer version 5.5 and higher

Windows/Mac Clients

- Netscape Navigator version 7.0 and higher

Mac OS X v10.2 or later

- Mozilla version 1.7 and later
- Mozilla FireFox version 1.0.6 and higher

Linux/Unix Clients

- Mozilla version 1.7 and later
- Mozilla FireFox version 1.0.6 and higher

Supported Xerox Multifunction Devices*

The following Xerox scan-enabled multifunction systems have been certified to work with SMARTsend:

- ColorQube™ 9201/9202/9203
- Document Centre 425, 426, 430, 432, 440
- Document Centre 460 ST, 470ST, 480ST, 490ST
- Phaser® 3635MFP
- WorkCentre® 232/238, 245/255, 265/275
- WorkCentre 4150, 4250, 4260
- WorkCentre 5222/5225/5230/5225A/5230A
- WorkCentre 5632/5638/5645/5655/5665/5675/5687
- WorkCentre 6400
- WorkCentre 7132, 7232/7242
- WorkCentre 7328/7335/7345/7346, 7425/7428/7435

- WorkCentre 7655/7665/7675
- WorkCentre 7755/7765/7775
- WorkCentre M20/M20i, M24
- WorkCentre M118/M118i
- WorkCentre Pro 32, 35, 40, 45, 55, 65, 75, 90
- WorkCentre Pro 123/128, 133, 165/175
- WorkCentre Pro 232/238, 245/255, 265/275
- WorkCentre Pro C2128/C2636/C3545
- Xerox 4595™ Copier/Printer (with caveats)

*Check www.xerox.com for SMARTsend support.

Internet Fax or Email enabled devices (through the use of SMARTsend Pro PaperWare coversheets), including:

- WorkCentre Pro 685/785
- WorkCentre M20i
- WorkCentre M118i
- WorkCentre M24

WorkCentre Pro and Document Centre Requirements

- Scan to File enabled
- TCP/IP
- LPR enabled
- DNS host name or static IP address assigned

Output Destination and Repositories Supported

- Email
- FTP
- Microsoft Network Folder
- NetWare Folder
(Novell® NetWare—version 5.x or 6.x)
- Remote Printer
- Scan to URL
- Domino.doc (version 3.1)
- Domino (version 5.x or 6.0)
- DocuShare 5.0 and 6.0
- Microsoft SharePoint Portal Server 2001, 2003 and 2007
- Hummingbird DM 5.1.0.5 (optional)
- Interwoven WorkSite 8.0 (optional)
- Documentum 5.2.5.SP3 (optional)
- Live Link Enterprise Server 9.5 (optional)

For more information, call or visit us online at www.xerox.com/office

