

**XEROX**<sup>®</sup>

Technology | Document Management | Consulting Services

CopyCentre<sup>®</sup>

C20

WorkCentre<sup>®</sup>

M20/M20i

copy | print | scan | fax | email

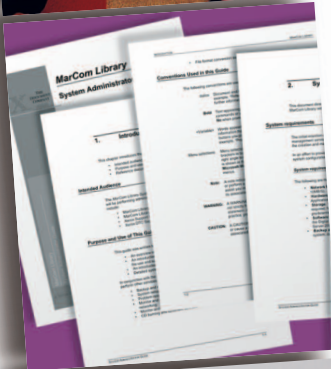
# Power and Performance within reach.



# Office machines

with the tools to **succeed.**

Meet the CopyCentre® C20 digital copier, WorkCentre® M20 and WorkCentre® M20i copier-printers: our newest business class machines. They perform basic office tasks with intelligence, provide high-level performance, day in day out, and sit comfortably on a desktop.



## Extremely simple to use

**Intuitive, easy to operate and incredibly convenient. Start with straightforward copy features that are simple to use or choose the additional functionality of network printing, fax and scan-to-email capabilities.**

- Easy to use walk-up copying
- Interface is easy to understand at a glance. Press a few buttons and your task is complete
- High-quality printing on a wide range of media
- Simple print drivers for fast installation and instant productivity (M20/M20i)
- Powerful faxing in colour or black and white (M20i)
- Scan in colour or black and white (M20/M20i)
- Simple scanning direct to PC through USB connection (M20/M20i)

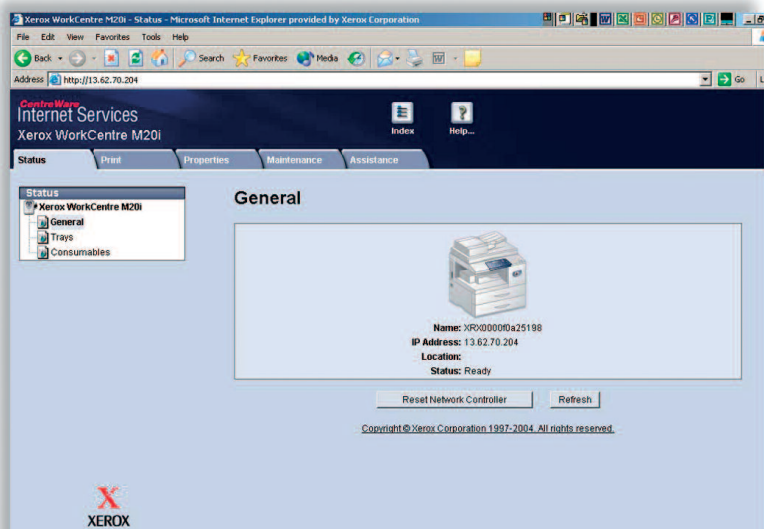
## Extra smart design

**Intelligent design and thoughtful feature set reduces the effort devoted to basic office tasks.**

- Print directly from your network – or from the Internet (networked models\*)
- Scan to email addresses with ease (networked models\*)
- Optical Character Recognition (OCR) and Image Editing Software are included to convert scanned images into editable text documents (M20/M20i)
- Xerox ControlCentre™ 5.0 lets you monitor fax usage, enter phonebook data and more – right from your PC (M20i)
- Remote device management tools available to easily monitor, manage and control networked devices (networked models\*)
- Optional Secure Print and Network Kit provides a higher level of document and network access security

\*Optional Secure Print and Network Kit provides a higher level of document and network access security

*CentreWare IS gives your entire network access to WorkCentre M20i features.*



The simple, intuitive control panel design of the CopyCentre C20 and the WorkCentre M20/M20i makes them easy to use. Many features are accessible with the touch of a single button.

Copy, fax and scan to email functions available through easy access buttons.

LCD panel shows job and machine status.

Separate button displays job status in LCD window.

Alpha-numeric keypad supports fax features.



Image shown is the M20i control panel

Convenient keyboard for scanning to email.

Frequently used features such as collate, reduce/enlarge, lighten/darken are controlled by separate buttons.

Select two-sided copying with just one button push.

Device status display shows whether the system is ready or needs attention.

## Excellent performance

CopyCentre C20 digital copier and WorkCentre M20 and WorkCentre M20i copier-printers come packed with a full range of high-performance features:

- 21 ppm speeds
- Automatic two-sided printing and copying saves paper and produces more professional looking documents
- Ultra-fast 33.6Kbps fax transmission with 16MB of fax memory (M20i)
- Scan-once-print-many reliability and productivity
- Electronic collation saves time by eliminating manual sorting

- 100-sheet bypass tray supports envelopes, transparencies and special media
- Optional second paper tray increases capacity to 1,200-sheets



WorkCentre M20i

## Rock-solid reliability.

The Xerox name is synonymous with quality, innovation and service. It also means day in day out reliability. CopyCentre C20 digital copiers and WorkCentre M20/M20i copier-printers are extremely durable and designed and built to perform flawlessly in today's high-speed, high-pressure office environments.

## Security

With WorkCentre M20/M20i, you stay in control. The M20/M20i offers device or optional network access protection that is safe and flexible. Optional Secure Print enables you to control when complicated documents are printed. The M20i also includes a secure fax mode, so sensitive information prints out only when you want it to.



CopyCentre® C20 / WorkCentre® M20 / M20i



Second Paper tray Option



Cabinet Stand Option

CONFIGURATIONS	CopyCentre® C20	WorkCentre® M20	WorkCentre® M20i
<b>Copy/Print</b>			
Speed		21 ppm	
First copy out time		< 8 seconds	
Resolution	600 x 600 dpi	up to 1200 dpi	
Processor	N/A	32-bit RISC processor with video controller functionality	
Connectivity	N/A	USB 2.0, Parallel	USB 2.0, Parallel, 10/100 BaseT Ethernet
<b>Scan</b>			
Resolution	N/A	600 x 600 dpi, 4800 dpi interpolated	
Scan-to-email	N/A	optional	standard
<b>Fax</b>			
Speed	N/A	N/A	33.6 Kbps
Resolution	N/A	N/A	presets up to 400 x 400 dpi
<b>Paper Handling</b>			
Automatic 2-sided	Standard		
Paper input capability	550-sheet Standard Tray, 100-sheet Bypass Tray		
Paper output	250-sheet Output Tray		
<b>Productivity</b>			
Standard features	50-sheet Duplex Automatic Document Feeder, Scan-Once-Print-Many Electronic pre-collation		Network printing, Scan-to-Email, Remote Device Management Tools
Optional accessories	550-sheet Tray, Foreign Device Interface Kit, Cabinet Stand		
		Optional Secure Print and Network Authentication Kit**	
		Optional Network Accessory Kit	
Duty cycle	Up to 20,000 pages per month		

## SPECIFICATIONS

### Copying

Speed: 21 copies per min.  
 Resolution: 600 x 600 dpi  
 First Copy Out: < 8 seconds  
 Full Duplex: Yes (1-2, 2-2, 2-1)  
**Reduce/Enlarge**  
 Platen: 25 – 400% in 1% increments  
 DADF: 25 – 100% in 1% increments  
 Productivity: Scan Once Print Many, Electronic Pre-Collation standard  
 Multiple Copies: Up to 999 copies of multiple page originals

### Printing (M20, M20i)

Technology: Laser black and white  
 Speed: 21 ppm  
 Resolution: 600 x 600 dpi; 1200 x 1200 dpi interpolated  
 First Print Out: < 9 seconds  
 Two-Sided: Yes  
 Secure Print: Optional  
 Page Description Language (PDL): PCL6 emulation Standard; PostScript 3 printing support (Network products)  
 Print Drivers: Windows 98/NT4.0/2000/Me/XP, MAC OS  
 Interfaces: USB 2.0 standard on M20 and M20i (USB cable included); Parallel Port, IEEE 1284, 10/100baseT Ethernet standard on M20i, optional on M20

### Scan (M20, M20i)

Compatibility: TWAIN standard  
 Technology: Direct Connect to PC (USB); Parallel Port, IEEE 1284  
 Scan Resolution:  
 Optical Resolution: 600 x 600 dpi  
 Interpolated Resolution: 4800 dpi  
 Pre-scan: 75 dpi

### Depth:

Black and white: 1 bit  
 Text and Halftone: 20 bit  
 Colour: 60 bit  
 Scan Driver: TWAIN Standard  
 Bundled OCR Software: PaperPort SE 9.0, OmniPage SE v2.0  
 Two-Sided: Yes

### Faxing (M20i)

Transmission Speed: 3 seconds per page  
 Communication Mode: Half Duplex  
 Modem Speed: 33.6 Kbps  
 Data Compression: JBIG, MMR/MR/MH (JPEG for colour fax transmission)  
 Resolution: pre-sets up to 400 x 400 dpi  
 Fax Memory: 16 MB  
**Dialing**  
 Speed Dials Up to 200 locations  
 Group Dials Up to 199 supported  
**Fax Features**  
 Halftones: 256 levels  
 Colour Fax Tx/Rec: Yes/No  
 Secure Fax: Receive Mode, secure mailbox  
 Battery Backup: Up to 100 hours when fully charged

### Email (M20i, Optional M20)

Scan to SMTP addresses  
 Local user access and authentication  
 Device network access and authentication  
 Guest mode access is available  
 Network address list search via LDAP

### Accessories

Network Accessory Kit (M20) (customer installable)  
 Adds 32MB Memory, Ethernet NIC, PostScript® 3 printing support, Email Keyboard, and applicable software and documentation  
 Secure Print and Network Authentication Kit\*\* (Customer installable) adds 96 MB and applicable software. Enables Secure Print and Network Authentication for Scan-to-email  
 Second Paper Tray  
 Cabinet Stand  
 Foreign Device Interface Kit (Service Install)

### Media Handling

**Input Paper Capacity**  
 Standard Tray: 550 sheets, optional second tray (550 sheets)  
 Bypass Tray: 100 sheets  
 Auto Tray Switching Capable  
**Paper Size**  
 Minimum: 127 x 176 mm  
 Maximum: 216 x 356 mm  
**Paper Weight**  
 Standard Tray: 60 – 90 gsm  
 Bypass Tray: 60 – 163 gsm  
 Document Handler: 50 Sheets  
 Output Tray Capacity: 250 Sheets  
 Media Types: Paper, envelopes, labels, transparencies

### Physical Dimensions (WxDxH):

Unit: 540 x 441 x 488 mm  
 Weight: 26 kg  
 Unit with Second Paper Tray Option: 540 x 441 x 619 mm  
 Weight: 30 kg  
 Unit with Cabinet Stand Option: 540 x 594 x 560 mm

### Electrical

Power Switch: Yes  
 Power: 110 VAC, 50/60 Hz or 220 VAC 50/60 Hz  
 Power Consumption:  
 Average: 450 watts  
 Power Saver Mode: 35 watts

### Operating Environment

**Temperature**  
 Maximum Range 10° – 32°C  
 Recommended Range 16° – 30°C  
**Humidity**  
 Maximum Range 20 – 80%  
 Recommended Range 30 – 70%  
 Device Memory: C20: 32 MB, M20: 32 MB, M20i: 80 MB (with Network Accessory Kit): 64 MB, M20i: 80 MB  
 Device Management: ControlCentre™ 5.0, CentreWare Internet Services (Networked Products) CentreWare Web, CentreWare DP, NDPS and HP Openview

### Supplies

**Approximate Yields**  
 Toner Customer Replaceable Unit (CRU) – Starter kit: 4,000 images\*; Replacement kit: 8,000 images  
 Drum Cartridge Customer Replaceable Unit (CRU) – 20,000 images\*  
 \*Capacities are approximate, based on 5% coverage on an A4-sized page. Declared yield values in accordance with ISO19572

### Agency Approvals

Safety: UL Safety  
 CSA Safety

\*\* Optional Secure Print and Network Authentication Kit is only available for networked models. Networked models include the M20 with optional Network Accessory Kit and the M20i).

The CopyCentre C20 and WorkCentre M20/M20i are designed to be customer-installable solutions.