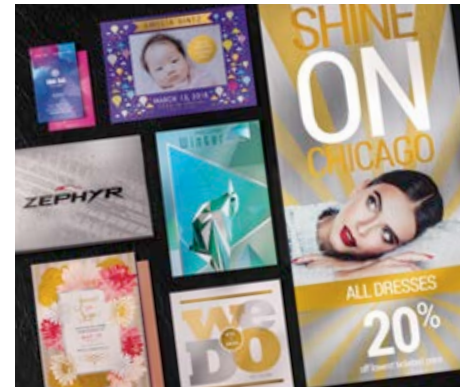


Drive new business results, brilliantly.

XEROX® IRIDESSE™
PRODUCTION PRESS

The Xerox® Iridesse™ Production Press offers all the hallmarks of a digital press – personalisation, economical short runs, and agile production – enhanced by new high-value inline capabilities that allow you to combine stunning four colour imagery with up to two Specialty Dry Inks in a single pass. These unique digital embellishments make it easy to unleash more results-driving “wow” per page.



Mixed Media Xceleration (MMX) delivers maximum productivity and performance for high-value, mixed stock, mixed embellishment jobs.

Color FLX Technology with EZ Swap lets you create a rainbow of iridescent effects by layering CMYK + up to two Specialty Dry Inks in a single pass.

Expand your options for automated finishing, including an integrated Xerox® Crease and Two-sided Trimmer for inline booklet making.



STAND OUT WITH EXCEPTIONAL IMAGE QUALITY

The Xerox® Iridesse™ Production Press takes digital prints to a whole new level with advanced imaging and stunning results.

Ultra HD Resolution: The combination of 1200 x 1200 dpi x 10-bit RIP rendering and 2400 x 2400 dpi x 1-bit print imaging yields Ultra High Definition (HD) that grabs serious attention. 10-bit RIP rendering, unique in the industry, feeds an image pipeline of data to Iridesse™ resulting in 1024 shades of gray, four times more than normal, for a visible difference.

Low gloss: New low gloss, small particle High Definition Emulsion Aggregate (HD EA) Toner, xerographic design advantages, and automatic IQ corrections work together with Ultra HD Resolution to create brilliant results for text, fine graphic details, tints, solids, and photographs.

STAND OUT WITH JAW-DROPPING EMBELLISHMENTS

While its four-colour quality is outstanding, it's only the beginning of what Iridesse™ can do. The press can be equipped with up to two additional stations that apply Specialty Dry Inks under or over CMYK.

HD EA Metallic Dry Inks: The sparkle of HD EA Gold and Silver metallics can be used on their own or layered with CMYK to deliver new, stunning iridescent palettes. It's never been easier to offer customers the embellishments they want, cost-effectively.

HD EA White Dry Ink: Complement CMYK or metallic objects on specialty substrates with White underlays and spot overlays.

HD EA Clear Dry Ink: Get impressive results in a single pass when you highlight page content with HD EA Clear Dry Ink spot embellishments. Multi-pass and dimensional capabilities add even more value.

STAND OUT WITH AGILE, RELIABLE DIGITAL DELIVERY

This press is built to run. Four, five, and six colours. A rainbow of iridescent palettes. Mixed media. Heavy stock. Extra Long Sheets up to 1.2 m. High-value inline finishing. Iridesse™ is synonymous with new capabilities and new levels of production confidence.

Automated, advanced technologies combine to take costly human touch out of press setup and colour maintenance. And complementary workflow solutions further simplify key processes so you get the most from your investment. Combined with a robust print path, versatile finishing options, and up to 120 pages per minute, it all adds up to brilliant new opportunities for high-value print production – and new revenue sources.

Specifications for the Xerox® Iridesse™ Production Press

IMAGE RESOLUTION

- Ultra HD Resolution (RIP 1200 x 1200 dpi x 10-bit, plus print 2400 x 2400 dpi x 1-bit)
- Halftone Screens:
 - 150, 175, 200, 300, and 600 Clustered Dot
 - 150, 200 Rotated Line Screen
 - Stochastic

TECHNOLOGY

- CMYK plus up to two Specialty Dry Inks in a single pass
- High Definition Emulsion Aggregate (HD EA) Toners and Dry Inks:
 - CMYK Toners plus Specialty Dry Inks: HD EA Gold, Silver, White, or Clear (rated speed)
 - Multi-Pass Specialty Dry Ink capability
- Imaging System with VCSEL Technology
- Extra Long Sheet (XLS) capability
- Automated Color Management: Full Width Array featuring the Automated Color Quality Suite (ACQS), Calibration and Profiling; within run colour consistency using process controls
- Automated Image Quality Management using EZ Press Check: Full Width Array Image to Media Alignment, 2D Density Uniformity Adjustment (inboard/outboard and lead/trail edge), 2nd Bias Transfer Adjustment
- Auto Sheet Clearing
- Custom Paper Setup through Control Center
- Dual-wire corotrons with auto-cleaning technology
- Advanced Belt Fuser technology with fuser belt refresh
- Advanced inline cooling module
- Advanced Single Pass Decurler (belt and roll technology/optimal sheet flatness)
- Seamless IBT (Intermediate Belt Transfer) with retractable Bias Transfer Rollers
- Modular feeding and finishing
- Advanced center registration technology for tight front-to-back registration of +/- 0.5 mm

PRODUCTIVITY/PRINT SPEEDS

- 120 ppm (A4), all weights
- 7,200 A4 impressions per hour
- 60 ppm (A3 – SRA3), all weights
- 3,600 (A3 – SRA3) impressions per hour

PAPER FLEXIBILITY/WEIGHTS

- Coated, uncoated, textured and dark stocks, labels, business cards, window decals, durable/synthetic papers, greeting cards, tabs, embossed, polyesters, and custom solutions
- Mixed-stock jobs supported with Mixed Media Xceleration (MMX) capability for optimised productivity
- 52–400 gsm

PAPER FORMATS/SIZES

- Maximum Sheet Size: 330 x 488 mm
- Minimum Sheet Size: 182 x 182 mm, tray inserter kit supports for 102 x 152 mm; see Optional High Capacity Feeder
- Maximum Print Area: 326 x 484 mm
- Extra Long Sheet (XLS):
 - Maximum Length (simplex): 1.2 m
 - Maximum Length (duplex): 729 mm
 - Minimum-Maximum Weight: 52-400 gsm

PAPER CAPACITY AND HANDLING

- Standard Paper Trays: Two at 2,000 sheets each
- 52–400 gsm coated/uncoated
Note: Tray capacity is based on 90 gsm substrate
- Minimum Sheet Size: 182 x 182 mm to Maximum Sheet Size: 330 x 488 mm
- Auto-Tray Switching/Reload-While-Run Capability
- Auto-Perfecting (4/4 impressions) from internal trays up to 400 gsm at full rated speed

ELECTRICAL

- Base Configuration: 200–240 VAC, 50/60 Hz, 50A (sole use)/single phase/Hubbell C8264-C
- Additional electrical required for print server, feeding/finishing devices:
 - 115 VAC 15 Amp for 60 Hz or 220 VAC 10 Amp for 50 Hz (Western Hemisphere)
 - 200–240 Volts, 10 Amp, 50 Hz (Europe)

SIZE

- Base Printing System (without RIP and/or feeding/finishing devices; W x D x H):
 - 3,009 mm x 1,092 mm x 1,865 mm
 - Weight: 1,373 kg

DUTY CYCLE AND AMIV

- Duty Cycle: 2.25 million impressions
- AMIV: 225,000–475,000 impressions

COLOUR SERVER

- Xerox® EX-P 6 Print Server Powered by Fiery®

OPTIONS

Extra Long Sheet Options

- Input:
 - Banner Feeder Extension Kit
 - MSI only (Advanced HCF required to print XLS)
 - Duplex up to 729 mm
- Output:
 - PR Finisher Banner Extension
 - PR Finisher top tray, HCS top tray, or OCT only

OPTIONS

Feeding

- Advanced High Capacity Feeder (with up to two stations for Dual Advanced High Capacity Feeders enabling up to 8 media pick points):
 - Two Paper Trays at 2,000 sheets each
Note: Tray capacity is based on 90 gsm substrate
 - 52–400 gsm coated/uncoated
 - Minimum Sheet Size: 182 x 182 mm to Maximum Sheet Size: 330 x 488 mm; optional tray inserter kit supports 102 x 152 mm minimum sheet size
 - Automatic Tray Switching/Reload-While-Run Capability
 - Auto-Perfecting (4/4 impressions) from internal trays up to 400 gsm at full rated speed; external trays up to 360 gsm
- Multi-Sheet Inserter (MSI) Tray
 - One tray at 250 sheets

Stacking

- Offset Catch Tray with 500-sheet capacity
- High Capacity Stacker:
 - 500-sheet top tray up to 330 x 488 mm
 - 5,000-sheet offset stacking; B5 LEF to SRA3
 - 52–350 gsm coated/uncoated
 - Available in Single or Dual combinations with unload-while-run capability
 - Includes one removable cart for offline finishing; additional carts available

Finishing

- **Xerox® Crease and Two-sided Trimmer:**
 - Provides full bleed trim when used with the Xerox® SquareFold® Trimmer Module
 - Standard and up to five programmable custom creases
- **Production Ready (PR) Booklet Maker Finisher:**
 - Provides stapled sets with a variable-length stapler
 - Handles booklets of up to 30 sheets
 - Punch and C/Z Fold options
- **Xerox® SquareFold® Trimmer Module:**
 - Square fold up to 25 sheets (100 pages)
 - Face trim between 2–20 mm
- **Plockmatic® Pro50/35 Booklet Maker:**
 - Folding capacity: 35 sheets of 80 gsm (Pro35); 1–50 sheets of 80 gsm (Pro50)
 - Stapling capacity: up to 35 sheets or 140 pages (Pro35); up to 50 sheets or 200 pages saddle-stitched stapling (Pro50)

See the Product Explorer Tool for additional Xerox and third party finishing solutions.

www.xerox.com