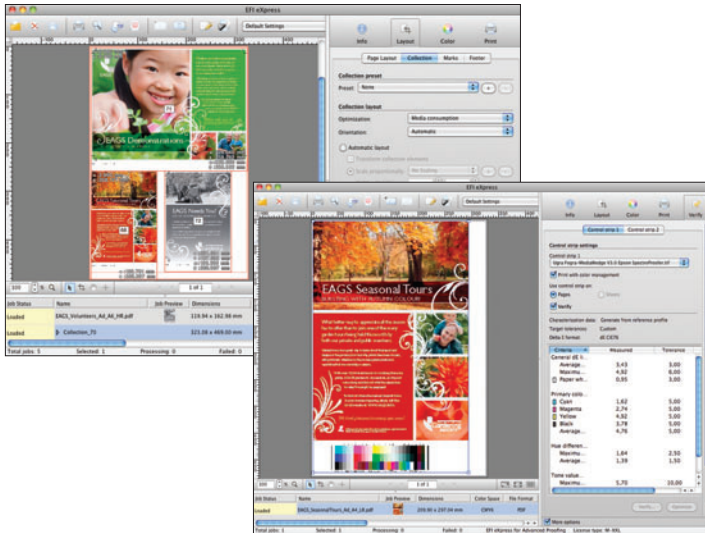


EFI™ Fiery eXpress 4.5 and Xerox® Phaser® 7800



For graphic artists and colour professionals, generating proofs that predict your final print characteristics is an essential capability. Whether you need high-quality proofing or high-resolution photo prints, the Phaser 7800 Colour Printer and Fiery eXpress 4.5 for Xerox combine to deliver cost-effective, in-house colour proofing.

Fiery eXpress 4.5 for Xerox

Easy for novices and experts alike, eXpress is a high quality proofing solution that lets creative professionals focus on being creative.

- **Unmatched ease-of-use.** Thanks to Fiery eXpress' setup wizard, colour management presets, control wedges and spot colour simulations are ready to use right after installation. Client access is via the Unidriver, which hides the complexity of the RIP behind a simple printer driver like GUI. Accessing eXpress is as easy as printing to an office printer.
- **Out-of-box experience.** Gets the highest colour quality and accuracy out of the box, without expert knowledge independent of any graphic art relevant front-end application (Adobe CS, Quark, etc.).
- **Fully featured colour management.** Fiery eXpress is fully ICC-compliant and comes with presets for proofing, photo and production. Plus, users can set up their own colour management preset.
- **Predictable print results.** Native PDF support (Adobe® PDF Print Engine) and support for Adobe® PostScript® 3™ ensure that PDF/X, PS and EPS files are ripped correctly and accurately.
- **Lean Production.** Powerful production tools such as collections, contact sheets, and various layout features maximise productivity and minimise paper waste.
- **Optimal spot colour simulations.** The spot colour simulation technique makes spot colour management easy. It allows for intuitive one-click spot colour customisation and includes PANTONE, PANTONE Plus, DIC, HKS and Toyo spot colour libraries.
- **Reprinting made easy.** Unlike a printer driver, print jobs in Fiery eXpress can be put on hold, reprinted or reordered in the job window for flexible on-demand output. Users can even define the number of copies and which pages from a multipage document should be printed, and apply new colour management settings.

EFI™ Fiery eXpress 4.5 and Xerox® Phaser® 7800

- **Supports latest industry standards.** Fiery eXpress 4.5 for Xerox includes the latest Ugra/Fogra (v2.2 & v3.0) and IDEAlliance ISO 12647-7 2009 media wedges. Such control strips can be verified with supported spectrophotometers from EFI and Xrite for proof certification.
- **Relevant to today's creative professionals.** All relevant file formats for creative and proofing processes are supported, including TIFF, JPEG, JPEG 2000, RAW, PSD, ImageEPS and ImagePDF, EPS, PS, PDF, the Remote Proofing Format (RPF) and full EXIF support with GPS coordinate tracking.
- **Compatible with major platforms.** Fiery eXpress provides cross-platform support for Mac OS X and Windows workstations, including Mac OS X 10.8 and Windows Vista and Windows 7. Independent from printer drivers, eXpress avoids printing issues due to driver or OS updates.
- **Always up-to-date.** The integrated Online Updater updates your software automatically with the latest profiles.



Xerox® Phaser® 7800 Colour Printer

The Phaser 7800 is an A3 colour printer that delivers the full complement of advanced capabilities today's most graphic-intensive environments require. Now any business that produces large volumes of high-resolution output, such as advertising agencies, graphic design shops, marketing communications firms, photography studios and countless others, can keep more of their business-critical print jobs in-house thanks to the Phaser 7800 colour printer's unbeatable state-of-the-art technologies.

Fiery eXpress 4.5 Workflow

Your Sources:

- Hot Folder (Mac/Windows)
- Virtual Printer (Mac/Windows)
- UniDriver (Mac/Windows)
- Digital Camera

Fiery eXpress 4.5

TIFF CMYK Export (manually)

Proof Print (CMYK/Multicolour)

Photo Print (RGB/CMYK/Multicolour)



Phaser 7800 with Professional Finisher
(requires installation of either a 3 Tray
Module or High Capacity Tandem Tray)

For more information, visit us at www.xerox.com/office

