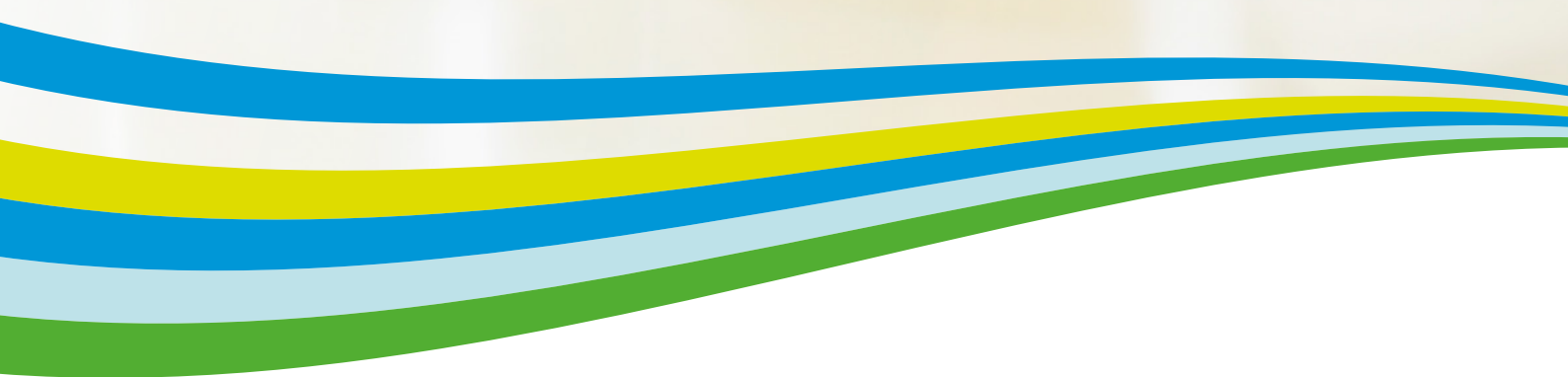


Xerox® ColorQube®
9303
A3
Colour
Multifunction Printer



Xerox® ColorQube® 9303 Colour Multifunction Printer

Impact Colour, Big Savings





Every successful business needs to reduce costs where it can while still providing the tools necessary to stay ahead of the competition.

Ideally, the technology you choose helps you promote your company while offering a significant return on your investment.

You need a complete solution that helps you solve problems, delivering efficiencies you never imagined. It's about helping your work stand out from the crowd with low-cost colour printing that enhances your sustainability efforts.

The Xerox® ColorQube® 9303 Colour Multifunction Printer is built on Xerox® ConnectKey® Technology. Problems solved.



Attention-grabbing colour, for less.

To succeed, your work must impress. That's why colour printing is a must – so your business is clearly superior not only in the minds of your existing customers, but those you hope to secure. Enable your business to work more effectively, while printing impressive colour documents with amazing cost savings.

Colour That Counts

The Xerox® ColorQube® 9303 helps your office documents get noticed with vibrant, glossy colours.

- **Make every document stand out.** Unlike laser printers, Solid Ink's printing process fills the gaps to create a new surface for superior print quality – even on inexpensive paper or recycled media.
- **Flexible print speeds.** Choose the perfect combination of speed, savings and image quality for any output – from drafts, to photographs, to marketing material.
- **User permissions.** Restrict access to print features by user, by group, by time of day and by application. For example, allow colour print jobs only during certain hours of the day, or emails always print in black and white.

Hybrid Colour Plan

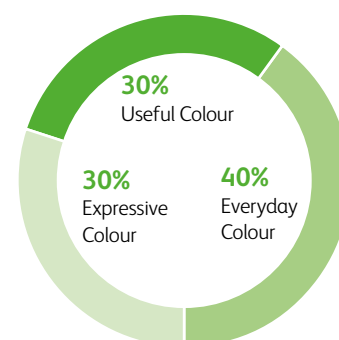
If you like the simplicity of metered billing, take advantage of high-impact colour with the Hybrid Colour Plan. It classifies documents based on the actual amount of colour used – no longer pay full-colour prices for low-colour documents!

The three tiers of the Hybrid Colour Plan:

- **Black + Useful Colour.** Billed at the black-only rate.
- **Everyday Colour.** Billed at a fraction of the full colour cost.
- **Expressive Colour.** Billed at the current market rate for colour.

Typical Office Document Colour Distribution

Office colour documents can be classified by the amount of colour used. According to Xerox research, the breakdown of colour documents in a typical office environment is:





Ease-of-use that's truly easy.

Your office, simplified. Experience unparalleled ease-of-use and convenience, while working faster with features and capabilities that simplify the way you complete daily office tasks.

- **Remote monitoring and management.** The Remote Control Panel feature lets you operate the Xerox® ColorQube® 9303 user interface from any office workstation as though you were standing at the device. Remotely train users and configure device settings with the peace of mind that integrated security allows only a single authorised operation at a time to prevent multiple remote procedures.
- **Single Touch Scan.** Use the Single Touch Scan feature to create a dedicated, easy-to-locate scan button directly on the colour touch screen interface. Assign the Single Touch Scan button its own scanning workflow for fast document distribution and archiving.
- **Helpful walk-up features.** Embedded help videos and online support from the UI or driver provide quick troubleshooting assistance right on the front panel.
- **Walk-up convenience.** Scan to and print from any standard USB memory device for easy portability.
- **Reliable operations.** A simple paper path and minimal moving parts keep the ColorQube 9303 up and running in the most demanding environments. It can even diagnose potential problems and fix them proactively, reducing service calls.
- **Easy, accurate billing.** The ColorQube 9303 connects to the network to automatically submit meters reads and automate supplies replenishment.
- **Apple® AirPrint.** Print email, photos and important office documents directly from your Apple iPhone® or iPad® with no drivers to install and no cables to connect. With AirPrint, your iPhone or iPad automatically locates and connects to the AirPrint-enabled the ColorQube 9303 over your office Wi-Fi network.

- **Mopria™ certified.** Mopria certification simplifies the mobile printing experience for tablets and smartphones to many printing devices, including the ColorQube 9303.



Easy Ink Loading

Each ink stick colour is uniquely shaped for simple drop-in loading. And ink can be topped off at any time – even if the device is running.



Comprehensive security for complete data protection.

For the success of your business it's critical that sensitive information stays protected. That's why we deploy the most complete set of features, technologies, and solutions from security-industry leaders that minimise risk by protecting vulnerable access points and critical business information.

- **Protect your confidential information.**

Safeguard all sensitive data with encrypted PDF files for scanning; complete hard drive encryption, compliant with the 256-bit AES FIPS 140-2 standard; and Image Overwrite with a 3-pass scrub process to ensure total deletion of all data fragments.

- **Prevent unauthorised access.** Prevent unauthorised access to the device by using network authentication with or without convenience authentication via Magstripe, proximity and Smart card (CAC/PIV/.Net) readers, Xerox® user permissions role-based and function-level login and IP Filtering.

- **Proactive threat management.**

Monitors new vulnerabilities and provides patches when necessary, ensuring your equipment stays current and your data is kept safe. Plus, you can receive up-to-the-minute updates via RSS feeds and stay informed via www.xerox.com/security.

- **Stay compliant with regulations.**

The Xerox® ColorQube® 9303 complies with the latest security standards across industries, including government, finance and healthcare. These include Common Criteria, HIPAA, Data Protection Act, COBIT and more. These devices can conform to any standard, with controls available to match your needs.

- **Gain complete visibility.** Prevent IP theft and ensure non-repudiation by having total visibility into the device and network. With security policy management and tracking of all activity on the device with Audit Log, you know who accessed what and when.



Powerful Partnerships

The ColorQube 9303 includes McAfee technology integration, resulting in the industry's first line up of multifunction printers that protect themselves from potential outside threats. McAfee's whitelisting technology ensures only safe, pre-approved system files run on your devices, minimising the need to manually update software levels against new security threats. Also, seamless integration with the Xerox® Managed Print Services toolset and McAfee allows for easy tracking and monitoring.

Plus, automatic Cisco® TrustSec Identity Services Engine (ISE) integration provides comprehensive visibility of all Xerox® ConnectKey® enabled multifunction printers endpoints to enforce IT-centric security policies and compliance.

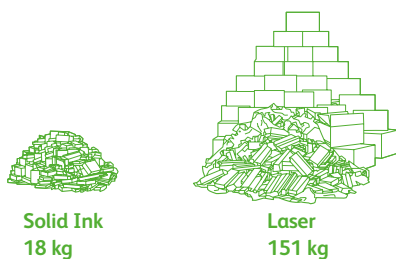


A focus on sustainability.

Reduce more than your colour costs. With a wealth of features focused on energy and supplies conservation, the Xerox® ColorQube® 9303 was designed to reduce your company's environmental impact and boost your bottom line.

Solid Ink Waste vs. Laser Waste

Cartridge-free Solid Ink is a true consumable; no empty toner cartridges to dispose or recycle. The Xerox® ColorQube® 9303 produces up to 90 per cent less waste during use than a comparable laser device.



Total waste produced from printing 12,500 pages per month for 4 years.

- **Less waste, lower impact.** Solid Ink sticks avoid the need for cartridges and excessive packaging, creating up to 90% less waste during use versus comparable laser devices. Plus, Solid Ink prints underwent an assessment according to the International Association of the Deinking Industry's Method 11 and were certified with a test result of "good deinkability," which means Solid Ink prints can be recycled alongside other recyclable paper.
- **Bio-derived ink.** Xerox® Solid Ink has been certified to have 30% bio-derived renewable material content by the National Association of Printing Ink Manufacturers.
- **Environmental paper options.** Solid Ink's full coverage allows effective use of a wide variety of paper, including recycled.
- **Ready when you are.** Intelligent Ready technology learns your usage patterns so it is ready to print when you need it.
- **Print responsibly.** By default, our print driver is set to two-sided printing, and the Earth Smart feature allows you to select other default settings that encourage responsible usage, such as no printing banner pages.
- **ENERGY STAR®.** The ColorQube 9303 meets the stringent ENERGY STAR requirements for energy use.
- **Fewer consumables.** The long-life Cleaning unit – with an average life of 330,000 prints – is the only replaceable component, and can be recycled through the Xerox® Green World Alliance programme. Visit www.xerox.com/gwa for more information.



Xerox® ColorQube® 9303
Optimised for:



Sustainability



Scanning



Security



Networking



Solutions



Wi-Fi

- 1** Two 550-sheet universal-size trays hold paper sizes up to A3.
- 2** Tray 3 holds a total of 2,100 sheets of A4 paper.
- 3** 100-sheet Bypass Tray handles media sizes up to 320 x 457 mm and weights up to 220 gsm.
- 4** For high-volume work groups, add a 4,000-sheet A4-size High Capacity Feeder. Optional kits allow it to hold up to 2,000 sheets of A4 or A3 media.

- 5** Embedded help videos provide step-by-step directions for quick troubleshooting assistance right at the touch screen.
- 6** Four output options allow you to choose from basic offset to finishing features such as stapling, hole punch and advanced capabilities including saddle stitched booklets and C- and Z-folded brochures.



- 6**
 - Offset Catch Tray
 - Office Finisher
 - High-Volume Finisher
 - High-Volume Finisher with Booklet Maker



Powerful solutions that help you connect in the office or on the go.

Xerox® Mobile Print and more.

Xerox has all the options to enable secure, accurate printing from most mobile devices to any printer or multifunction printer, regardless of brand. Plus, Xerox offers IT-friendly optional capabilities such as PIN code access and multiple mobile operating systems. For more information, visit www.xerox.com/mobile.

Customise your solutions.

Xerox Extensible Interface Platform® Serverless technology allows creation of Xerox® ConnectKey® Apps to run on ConnectKey enabled multifunction printers without the need for additional IT infrastructure. This allows you to simplify and personalise the usability of your device with a range of capabilities from support applications to scanning.

- **Xerox® ConnectKey® for SharePoint® or Xerox® ConnectKey® for DocuShare®.** Scan files directly into Microsoft® SharePoint® or Xerox® DocuShare® and other Windows® folders. Plus, you can go beyond basic file storage and PDF creation by automatically converting documents to intelligent, structured data with easy file naming and routing tools.
- **Xerox® ConnectKey® Share to Cloud.** Provides easy, secure, scalable scanning to popular cloud-based repositories such as Google Docs, Salesforce.com, Office 365 and Dropbox™, using custom-designed workflows that leverage our Xerox Extensible Interface Platform® technology.

Learn more about Xerox® Workflow Solutions at www.office.xerox.com/software-solutions

The ColorQube 9303 Colour Multifunction Printer is built on the Xerox® ConnectKey® Technology. For more information, go to www.connectkey.com.

Device Specifications		ColorQube 9303
Speed		Up to 55 ppm colour / 60 ppm black and white
Flexible Print Speeds		From 38–85 ppm colour / From 38–95 ppm black and white
Duty Cycle ¹		Up to 300,000 pages / month
AMPV ²		15,000 to 75,000 pages
Hard Drive / Processor / Memory		Minimum 160 GB / 1.5 GHz Dual-core / 1 GB system plus 1 GB page memory
Connectivity		10/100/1000Base-T Ethernet, High-Speed USB 2.0 Direct Print, Optional Wi-Fi (with Wireless Connectivity Kit)
Controller Features		Unified Address Book, Remote Control Panel, Online Support (accessed from the user interface and print driver), Configuration Cloning
Copy and Print		
First-print-out Time (as fast as)		7.2 seconds colour
Print and Copy Resolution		Up to 600 x 600 dpi
Page Description Languages		Adobe® PostScript® 3™, PDF, PCL® 5c / PCL 6, XML Paper Specification (XPS®)
Print Features		Print from USB, Earth Smart Driver Settings, Job Identification, Booklet Creation, Store and Recall Driver Settings, Bidirectional Real-time Status, Scaling, Job Monitoring, Colour By Words
Mobile Printing		Apple AirPrint, Xerox® Mobile Print Solution (Optional), Xerox® Mobile Print Cloud (Optional), Xerox® PrintBack, Mopria™ certified
Scan	Standard	Destinations: Scan to Mailbox; Scan to USB, Scan to Email, Scan to Network; File Formats: PDF, PDF/A, XPS, JPEG, TIFF; Convenience Features: Scan to Home, Single Touch Scan, Searchable PDF, Single/Multi-Page PDF / XPS / TIFF, Encrypted / Password Protected PDF, Linearised PDF / PDF/A
	Optional	Software Packages: ConnectKey® for Sharepoint®, ConnectKey® to DocuShare®, ConnectKey® Share to Cloud, Xerox® Scan to PC Desktop® SE and Professional
Fax	Standard	Internet Fax, Fax Build Job, Network Server Fax Enablement
	Optional	Fax Forward to Email or SMB, Walk-up Fax (one-line and two-line options, includes LAN Fax)
Security	Standard	McAfee® Embedded, McAfee ePolicy (ePO) Compatible, Hard Drive Image Overwrite, 256-bit Encryption (FIPS 140-2 compliant), Common Criteria Certification (ISO 15408), Secure Print with Timed Deletion, Secure Fax, Secure Scan, Secure Email, Cisco® TrustSec Identity Services Engine (ISE) Integration, Network Authentication, SSL, SNMPv3, Audit Log, Access Controls, User Permissions
	Optional	McAfee Integrity Control, Smart Card Enablement Kit (CAC/PIV/.NET), Xerox® Secure Access Unified ID System®
Accounting	Standard	Xerox® Standard Accounting (Copy, Print, Scan, Fax, Email), Network Accounting Enablement
	Optional	Equitrac Express®, Equitrac Office®, Equitrac Professional®, YSoft® SafeQ®
Paper Input	Standard	Duplex Automatic Document Feeder: 100 sheets; Sizes: 148 x 210 mm to 297 x 420 mm
		Bypass Tray: 100 sheets; Custom sizes: 104 x 210 mm to 320 x 457 mm
		Trays 1–2: 550 sheets each; Custom sizes: A5 to A3
	Optional	Tray 3: 2,100 sheets; Size: A4
Optional	High Capacity Feeder (HCF): 4,000 sheets; Size: A4 long edge feed	
	HCF Kits (HCF required): 2,000 sheet A3 Short Edge Kit or 2,000 sheet A4 Short Edge Kit	
Paper Output / Finishing	Optional	Offset Catch Tray (OCT): 500 sheets
		Office Finisher: 250-sheet top tray, 2,000-sheet stacker tray, 50-sheet multiposition stapling, 2 or 4-hole punching (optional) High Volume Finisher: 250-sheet top tray, 3,000-sheet stacker tray, 100-sheet multiposition stapling, 2 or 4-hole punching (optional) High Volume Finisher w/ Booklet Maker: 250-sheet top tray, 3,000-sheet stacker tray, 100-sheet multiposition, stapling, saddle-stitch booklet maker, V-folding, 2 or 4-hole punching (optional) Z Fold / C Fold Unit with HVF w/Booklet Maker: adds A4 Z- and C-folding Post Process Inserter with HVF and HVF w/Booklet Maker: adds preprinted inserts Convenience Stapler: staples 50-sheets (based on 80 gsm)

¹ Maximum volume capacity expected in any one month. Not expected to be sustained on a regular basis; ² Average Monthly Print Volume – Expected regular monthly throughput

Other Awards



BLI 2013 Outstanding Achievement in Innovation Award for Xerox® ConnectKey® Share to Cloud

[Article](#) [Certificate](#)



BLI 2013 Pick of the Year Award for Xerox® Mobile Print Cloud – Outstanding Small Business Mobile Print Solution

[Article](#) [Certificate](#)



BLI 2014 Pick of the Year Award for Xerox® Mobile Print Solution – Outstanding Enterprise Mobile Print Solution

[Article](#) [Certificate](#)



BLI 2014 Document Imaging Solutions Line of the Year Award

[Article](#) [Certificate](#)

For more detailed specifications, go to www.xerox.com/office/CQ9300Specs. To view a product video, visit www.xerox.co.uk (United Kingdom) www.xerox.com/index/enie (Eire).

©2015 Xerox Corporation. All rights reserved. Xerox®, Xerox and Design®, ColorQube®, ConnectKey®, DocuShare®, Scan to PC Desktop®, Xerox Extensible Interface Platform® and Xerox Secure Access Unified ID Systems® are trademarks of Xerox Corporation in the United States and/or other countries. Mopria™ is a trademark of the Mopria Alliance. As an ENERGY STAR® partner, Xerox Corporation has determined that this product meets the ENERGY STAR guidelines for energy efficiency. ENERGY STAR and the ENERGY STAR mark are registered U.S. marks. The information in this brochure is subject to change without notice. Updated 01/15 BR8888 Q93BR-01EE