

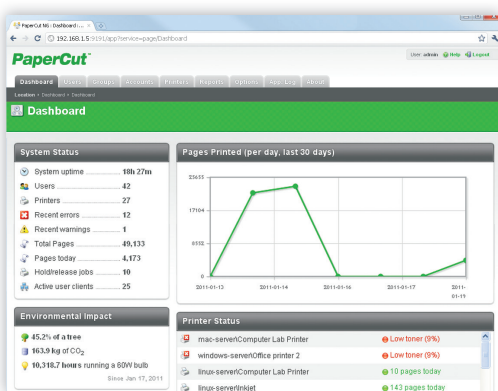


## EDUCATIONAL QUICK FLYER

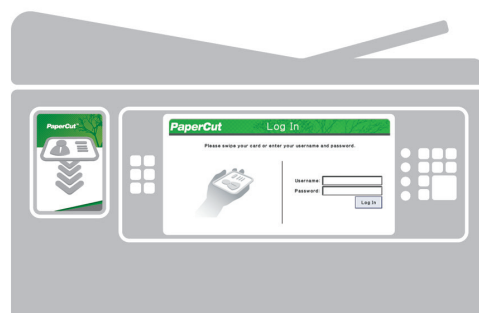
# Report Use - Reduce Cost - Secure Print Manage Print, Copy, Scan and Fax

### Web Based Administration

PaperCut MF provides "out of the box" browser-based administration access from any network location enabling centralised management of every user and device. Web technologies make cross-platform support easy as there is no need for additional software to be installed and no web server configuration.

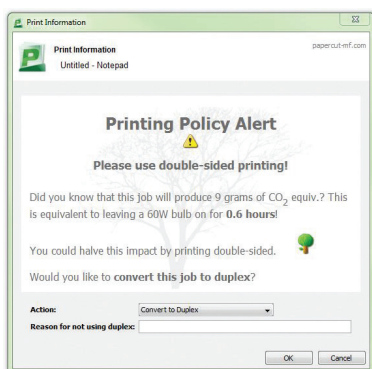


A key feature of the administration interface is the dashboard tab – an easy-to-read single page view of the printing environment for administrators. The Dashboard page utilises a number of gadgets to present key real time information, such as, system activity and status updates, along with trend information and statistics from past activity, such as, number of pages printed and environmental impact measures.



### Intuitive and Easy to Use







PaperCut MF is regarded as the simplest system of its type to deploy and manage. System administrators have full access to administration and configuration via a familiar web interface.



It offers:

- User directory (eg. Active Directory and others) integration and automatic user account creation
- Secure print release and Find-Me printing
- Administrator dashboard with real-time status updates
- Web Print: Driverless printing for wireless devices
- Optional client and account billing
- Ability to encourage responsible use via popup notifications

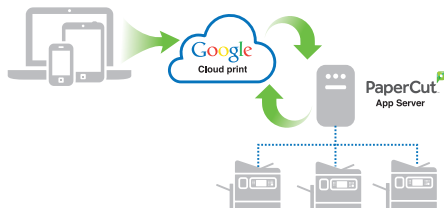
### Benefits of PaperCut

-  **Control cost**
-  **Manage copiers**
-  **Report usage**
-  **Access devices**
-  **Responsible Usage**
-  **Secure documents**

## Google Cloud Print

How it Works:

1. PaperCut publishes selected printers to Google Cloud Print, making them available to Google Cloud Print user applications.
2. A mobile or desktop user prints a document or email using Google Cloud Print and selects a published printer.
3. PaperCut is notified and downloads the print job from the cloud authenticating the print job with the Gmail Account.



## iPhone & iPad Printing



## Technical Specifications

### Scalability:

- 5 to 500,000+ users

### Architecture

- Single server or multi-server environments
- Monitor locally attached printers
- Client software is optional
- 32-bit and 64-bit native

### Supported Server Operating Systems:

- Microsoft Windows Server (any edition including 64-bit and server core)
- Mac OS X Server (10.4 or higher)
- Linux (any modern distribution)
- Novell OES Linux and iPrint

### User Directory:

- Active Directory (native integration including nested groups and OU's)
- OpenDirectory
- eDirectory
- LDAP
- NIS, PAM, Samba, and others

### Encryption:

- SSL encryption used for sensitive client server communication.

### Supported Failover

- Microsoft Failover Server
- Microsoft Cluster Server
- Veritas Cluster Server
- Linux HA and Novell Cluster

### Supported Workstation Operating Systems:

- Microsoft Windows (any edition)
- Mac OS X (10.4 or higher)
- Linux (any modern distribution)
- Unix Workstation (Java required to run client software)

### Database Servers:

- Self managing internal database: suitable for up to 5,000 end users
- Microsoft SQL Server 2000/2005/2008/2012/2014 (either 32 or 64 bit)
- Microsoft SQL Express 2005/2008/2012/2014 (free from Microsoft)
- PostgreSQL 7.1 or higher
- MySQL 5.0 or higher
- Oracle 9.2 or higher

### Licensing:

- Unlimited printers, servers and workstations.

## Secure Print Release

PaperCut's Find-Me printing feature enables users to print to a global virtual queue. Jobs are paused and only printed when the user releases the job at any compatible MFD/printer:

- Improved document security and convenience.
- Reduce IT administrators needed to manage multiple print drivers and queues for both workstations and notebooks.
- Find-Me printing minimizes waste and has been shown to reduce printing output by up to 20% in busy office environments.
- Support for multiple release methods ranging from auto release on authentication to active release job-by-job.



End users can view and manage held print jobs at the MFD

## On-Line Web Cashier

Web Cashier is a basic Point of Sale (POS) system to charge items to PaperCut accounts and deposit funds into users' accounts. It is a standard product feature.

## Managing Quotas

Users can operate in either credit or debit with defined account rules including how and how often an account is credited. Use network groups to define how additional quota/credit is assigned. Use network groups to define how additional quota/credit is assigned is duplicated. For example, allowing a specific group of users to accumulate their quota while others operate on a "use it or lose it" basis.

## Payment Gateways

Give end users the ability to make payments into their PaperCut account using payment gateways. Payment gateways allow third party systems to connect to PaperCut in a supported manner. Common gateways include leading providers like PayPal and Authorize.Net which allow real-time online payments via credit card. PaperCut also supports closed or internal payment systems such as a main college funds account. Hardware gateways are available to support a range of cash loaders, self-service kiosks and bill and coin boxes. For hardware, please refer to a PaperCut MF Authorized Solution Center.