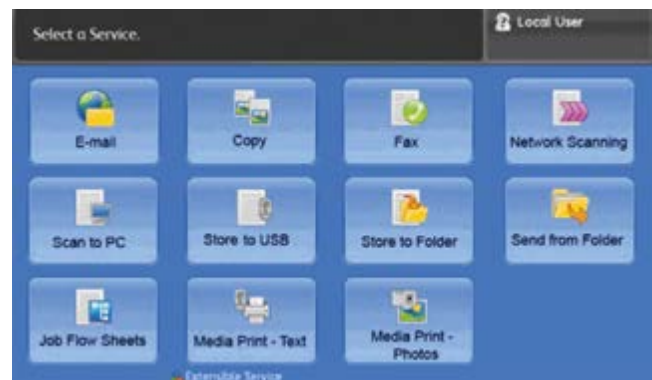


Xerox® Integrated Colour Server for the Xerox® Colour 560/570 Printer

A Great Value and Seamless Integration

With the Xerox® Integrated Colour Server that comes standard with your 560/570 Printer, you can count on world-class colour and superior high-end office workflows so you can do what you do best. For high-end office applications, you will be delighted with unrivalled simplicity, productivity and reliability – all this and a great value, too!

- Flexibility to create a wider range of applications. Expansive media range – print everything from postcards to posters. Inline finishing options offer a professional polish with stapling, hole-punching and folding for presentations, brochures, reports and newsletters.
 - Xerox® Mobile Print. Now printing can be simple, convenient and secure from any email-enabled device, such as a smartphone, iPad® or other tablet. An ideal option for any business with a mobile workforce looking for more flexible printing options.
 - Customise your print driver settings for economy and efficiency. For example, adjust settings for specific applications, such as always printing emails in black and white.
 - Scan, print, copy, fax and route files – all at once. Concurrent operations maximise productivity, letting multiple users perform different tasks simultaneously.
 - Superior scanning. Easily share files or introduce electronic archiving with powerful scan capabilities. Create text-searchable files at the device for easy retrieval. Compression technology reduces network load to enable fast transmission.
- Automate everyday work. Create job flow sheets to automatically route documents to predefined locations, including email addresses, fax destinations and FTP/SMB sites.
 - Remotely manage the device. CentreWare® IS Embedded Web Server automates installation, troubleshooting, feature setup and upgrading.
 - Manage and track device usage. Internal Auditron sets limits of device features for analysis and billing purposes. Xerox® Standard Accounting provides reports for greater cost control of all device functions.
 - Easy, accurate billing and supplies replenishment. Automatic Meter Reading (AMR) collects and submits meter reads and Automatic Supplies Replenishment (ASR) enables automatic ordering of toner to save time.



Xerox® Integrated Colour Server

Hardware Specifications

(equal or better)

- 80 GB hard disk drive, 2 GB RAM
- 10.4" colour touchscreen flat-panel display
- Ethernet interface (10 MBTX/sec, 100 MBTX/sec, 1,000 MBTX/sec option)

Print Features

- Automatic two-sided
- Secure print
- Delay print
- Sample set
- Booklet creation
- Cover selection
- Paper selection by attribute
- N-up
- Watermarks
- Banner sheets
- Fit to new paper size
- Output tray selection
- Optional print from USB

Fax

- Optional Walkup PSTN fax (one-line and three-line options) with Internet fax
- Fax over IP (T.38) Kit
- Network Server Fax Enablement Kit features:
 - LAN Fax
 - Fax Forward
 - Two-sided Send and Receive
 - Fax up to A3
 - Fax Build Job

Accounting

- Auditron
- Xerox® Standard Accounting (copy, print, fax, scan)
- Enabling Colour access control
- Optional Network Accounting Enablement Kit

Client Environments Supported

- Windows XP SP1 and above (32 and 64 bit), Server 2003/2008 (32 and 64 bit), Vista (32 and 64 bit), Windows 7 (32 and 64 bit), Mac OS 10.4 and above, Citrix, Custom driver for Unix: AIX 5 v5.3, HP UX 11.0/11i v2, Solaris 8/9/10, Linux Fedora Core 1/5, Red Hat ES4, SUSE 10/11
- Citrix, WHQL certification*

*Dependent on configuration, software version

PDLs and Data Formats

- PDF, XPS®, PCL 6 emulation, HP-GL2 (direct submission), TIFF, JPEG
- Adobe PostScript 3 (option)

Scan and Copy

- Robust Set of Scan/Copy Functions – Plus Scan to Email, Scan to Folder, to PC, to Mailbox (private and public)
- Options include Scan to USB, FTP, SMB, Desk, Text searchable PDF, PDF/A, XPS, Thumbnail Preview

Security

- Standard Secure Print, Authentication with LDAP/Kerberos/SMB/CAC, Password Protected PDF, FIPS 140-2 encryption, S/MIME Encrypted Email, IPSec, 802.1X, SNMP v3.0, Email over SSL, Image Overwrite (Immediate, Scheduled, On Demand), Hard Disk Data Encryption, Audit Log Optional CAC, Xerox Secure Access Unified ID System®, IPv6 Ready, 256 Bit Encryption
- Common Criteria Certified

Other Options

- USB, Media Card Reader, Common Access Card Enablement Kit, Accounting Options
- Xerox Extensible Interface Platform® (EIP) Enabled, Foreign Device Interface
- Mobile/Smartphone Printing

Electrical Requirements

- Printer: 220 - 240 VAC, 50/60 Hz
- Options: 100 – 240 VAC, 50/60 Hz
- Optional Feeding/Finishing:
 - Each module requires 100 – 240 VAC, 50/60 Hz power

Printer Dimensions

- Height: 1,391.5 mm
- Width: 1,574 mm
- Depth: 787 mm



For more information on the Xerox® Colour Server, please contact your Xerox representative, or visit us online at www.xerox.com.

